

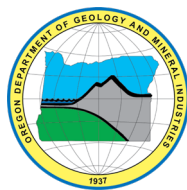
State of Oregon
Oregon Department of Geology and Mineral Industries
Ruarri Day-Stirrat, State Geologist

OPEN-FILE REPORT O-25-01

**EARTHQUAKE AND TSUNAMI IMPACT ANALYSIS FOR
THE OREGON COAST**

Coos County Community Profiles

By Jonathan C. Allan¹ and Fletcher E. O'Brien²



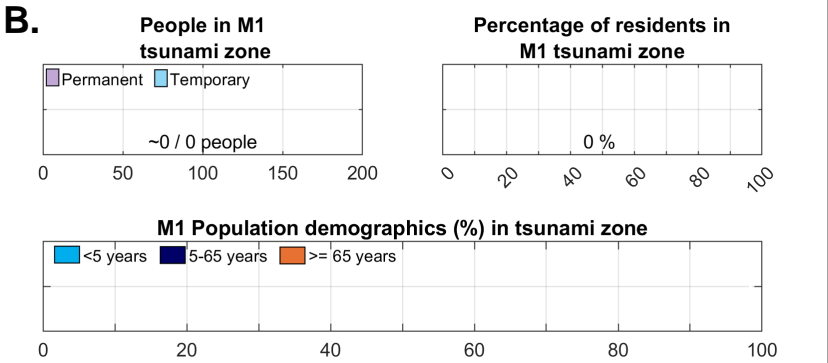
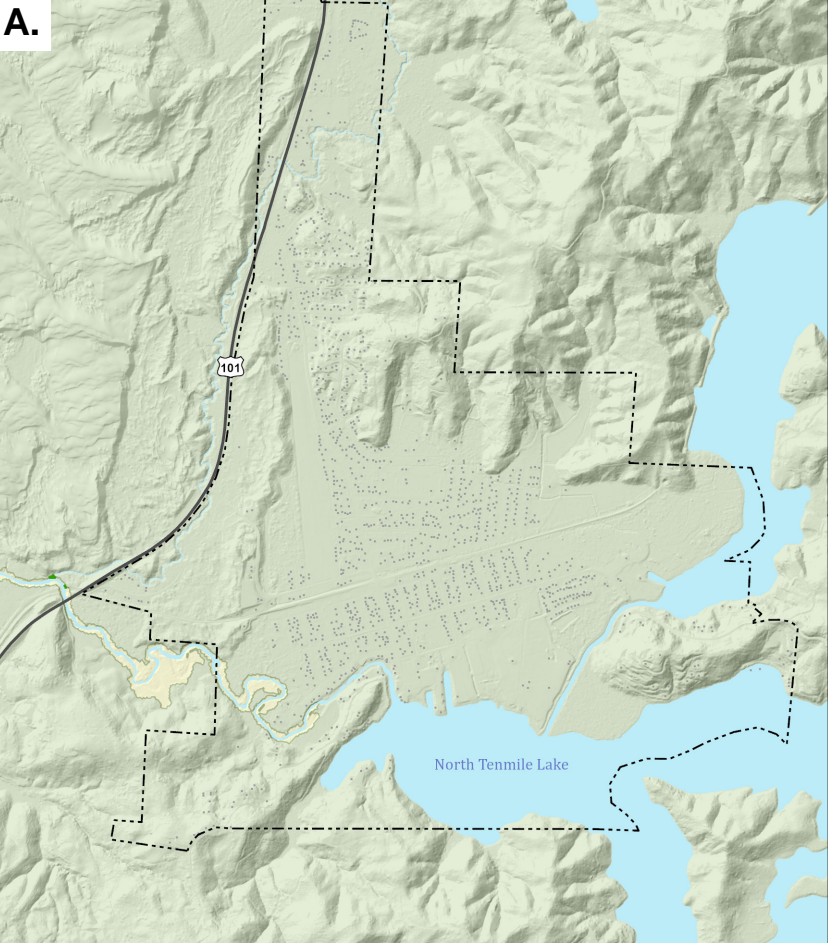
2025

¹Oregon Department of Geology and Mineral Industries, Coastal Field Office, P.O. Box 1033, Newport, OR 97365

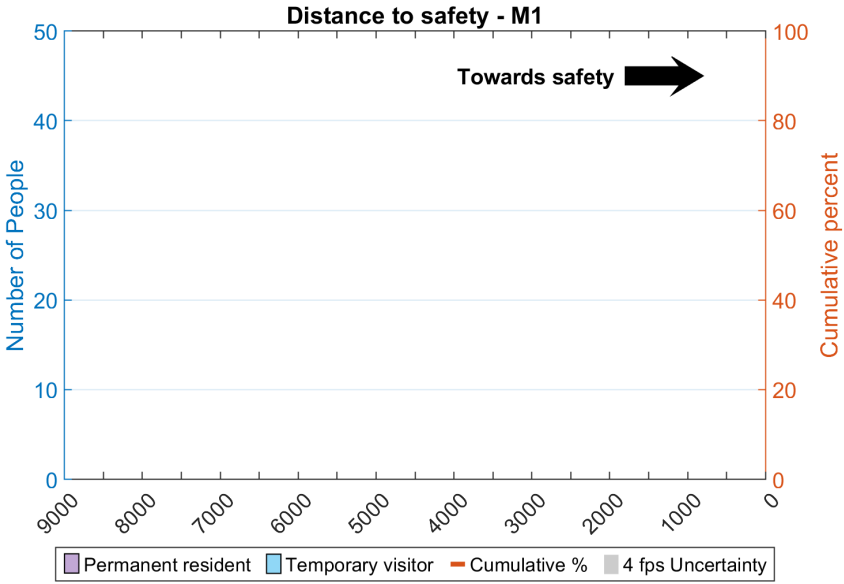
²Oregon Department of Geology and Mineral Industries, 800 NE Oregon Street, Suite 965, Portland, OR 97232

Lakeside - M1

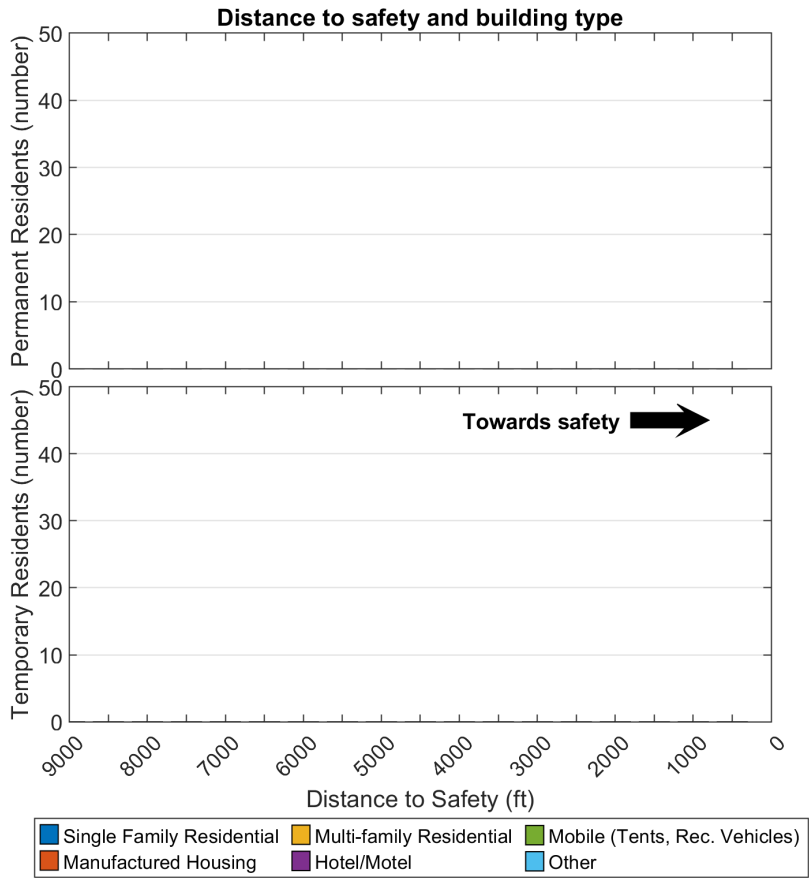
Casualty estimates assume a MODERATE WALK travel speed (4 ft per second)



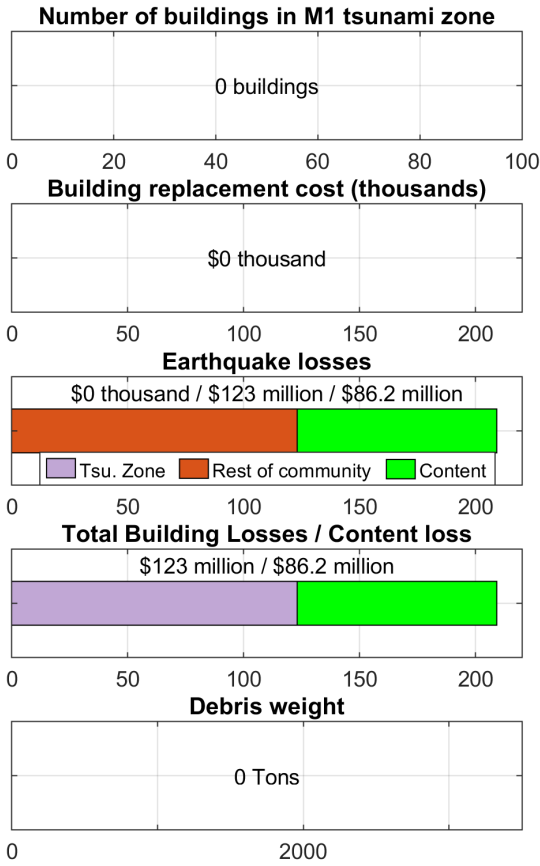
C.



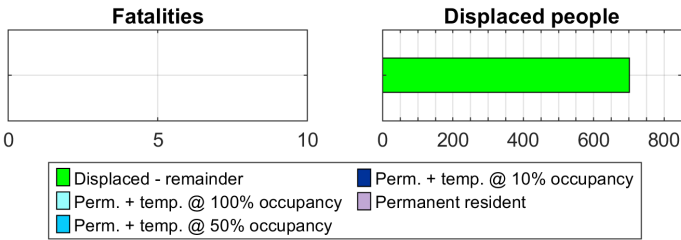
D.



E.



F.

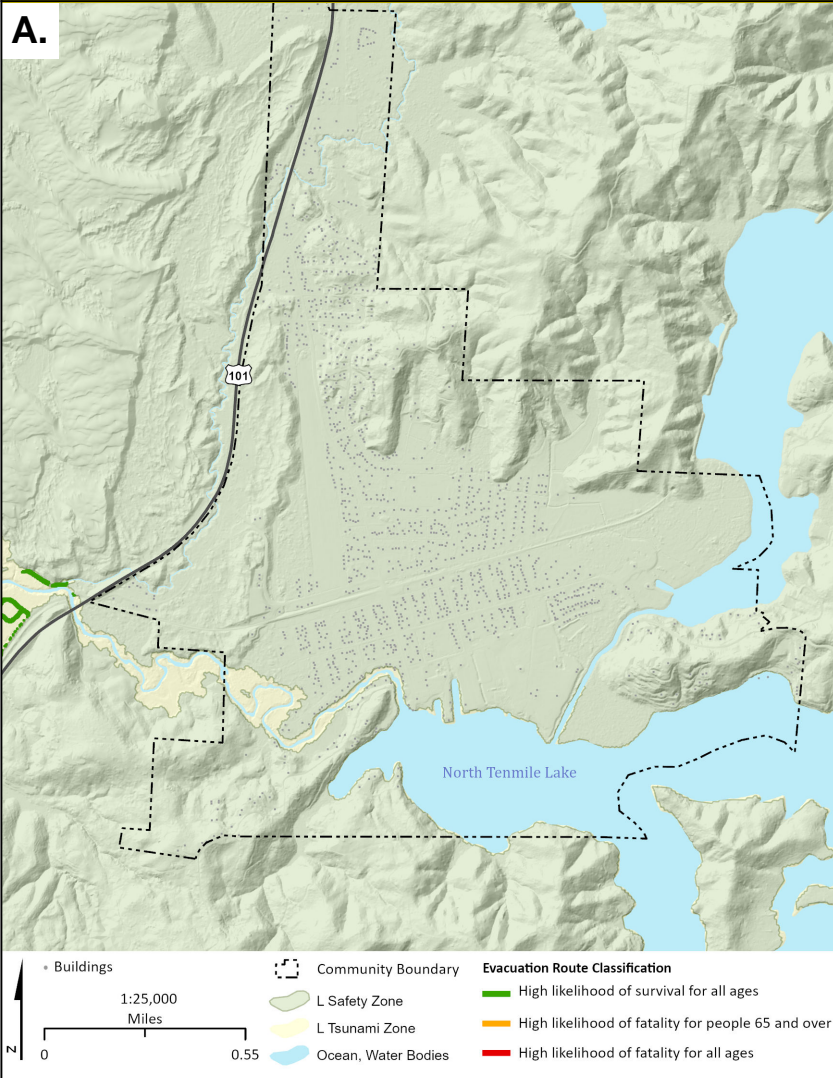


Description	Total
Earthquake Injuries (Entire Community)	80
Tsunami Injuries - Permanent + Temporary	0
Tsunami Fatalities - Permanent	0
Tsunami Fatalities - Temporary @ ~100% occupancy	0
Displaced Population - Permanent	560
Displaced Population - Permanent + Temporary	700

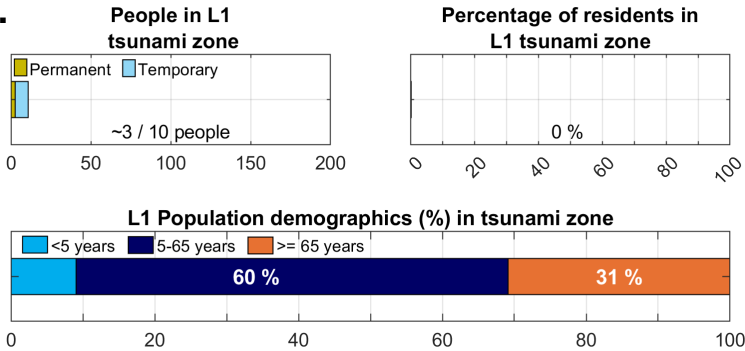
Lakeside - L1

Casualty estimates assume a MODERATE WALK travel speed (4 ft per second)

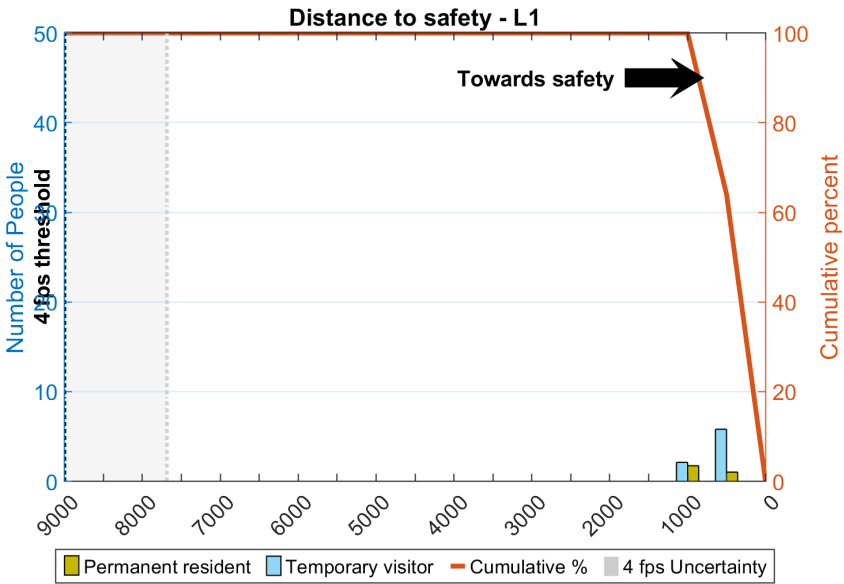
A.



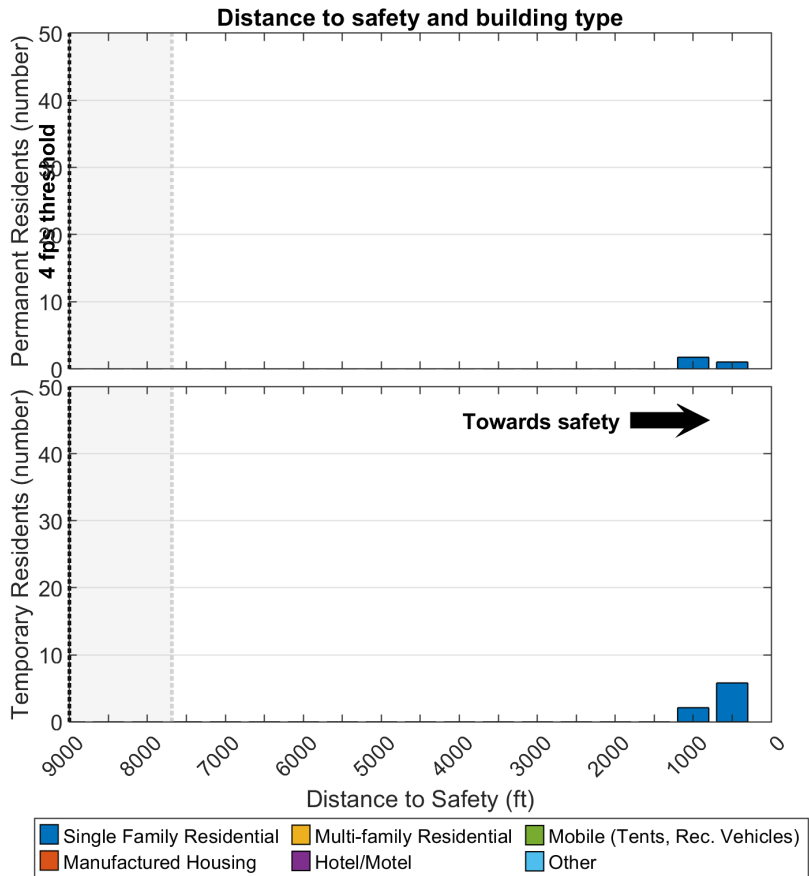
B.



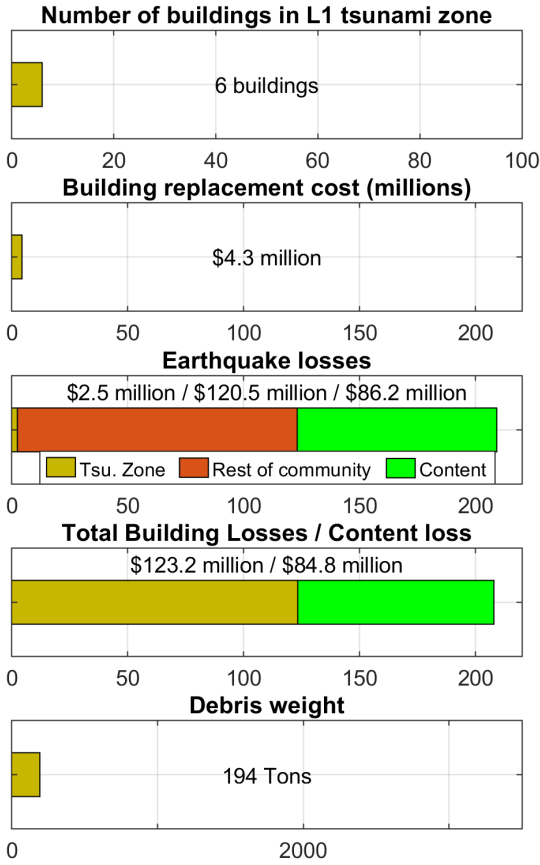
C.



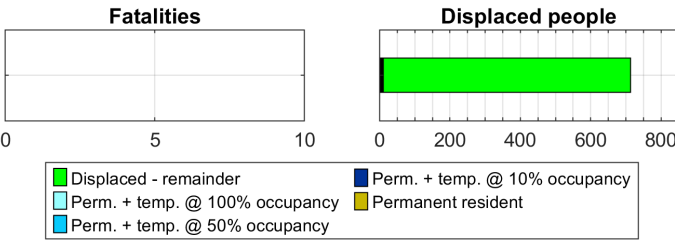
D.



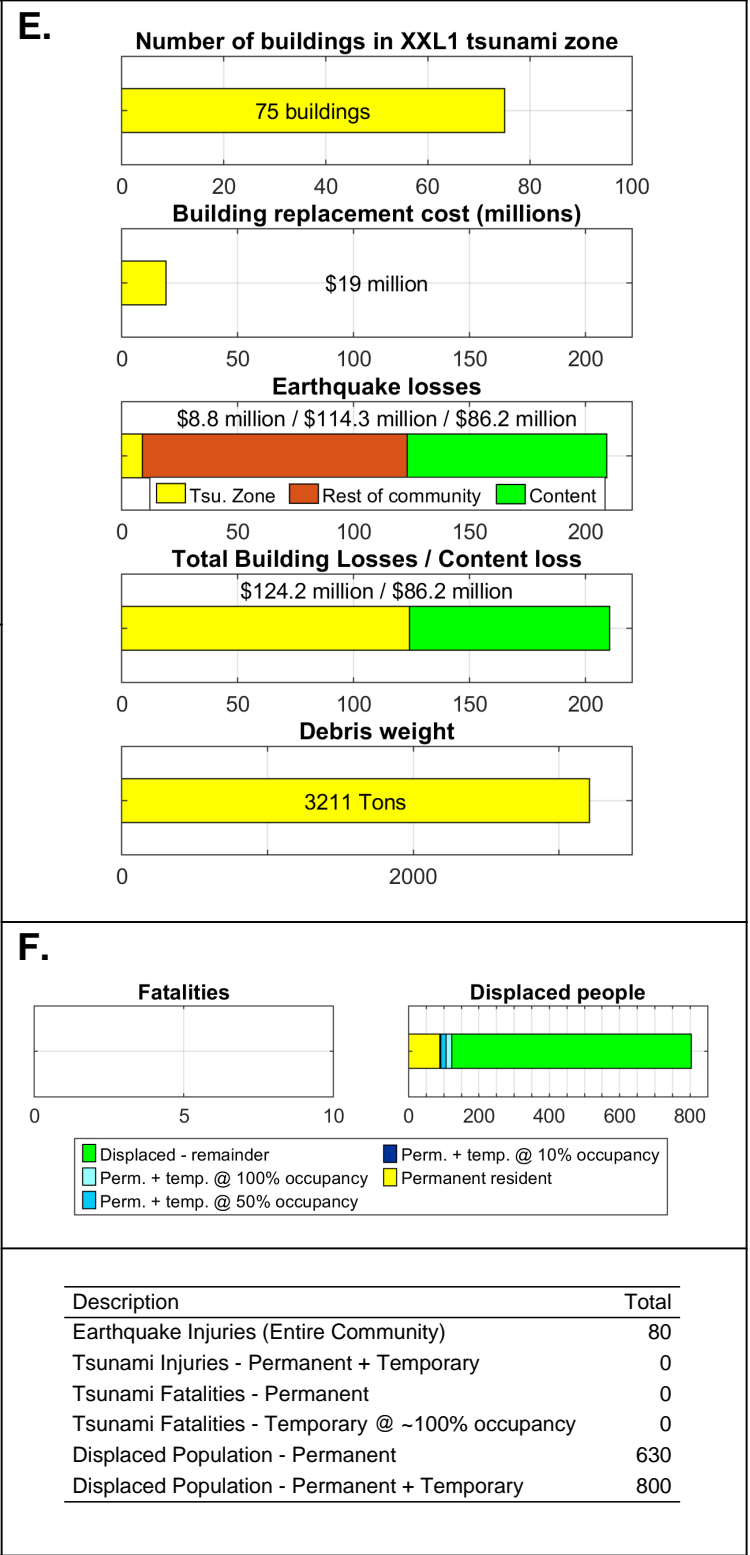
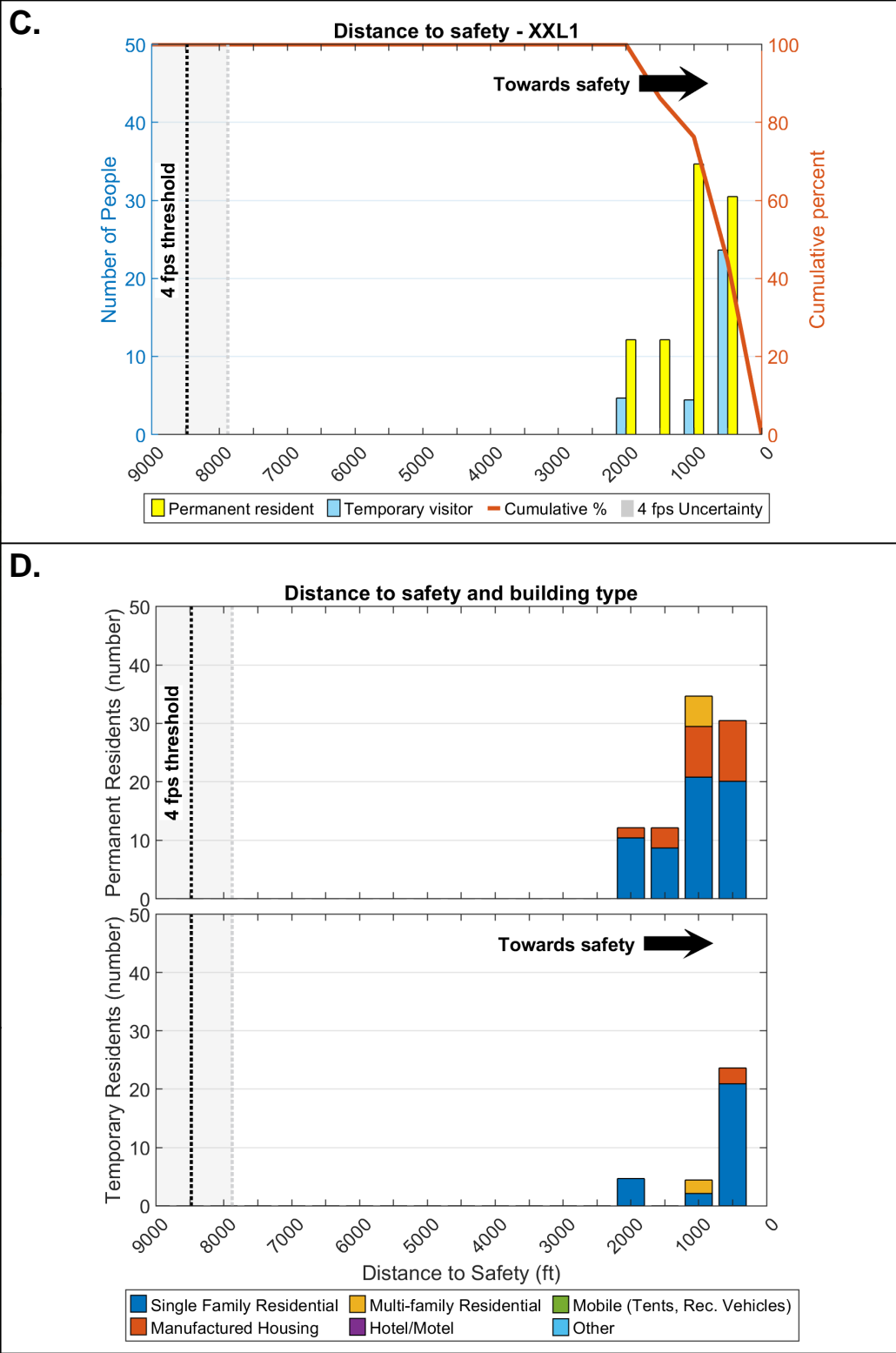
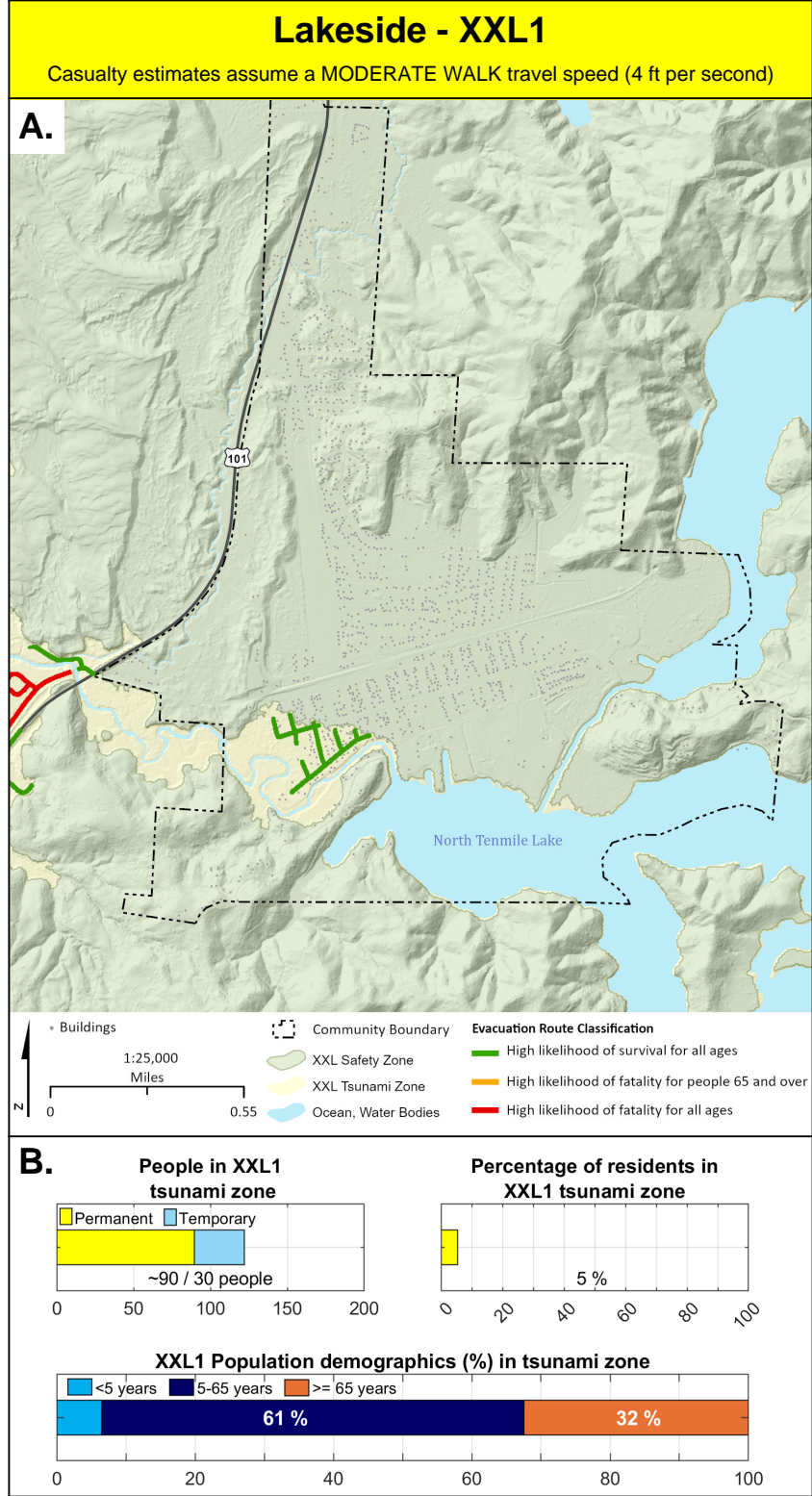
E.



F.



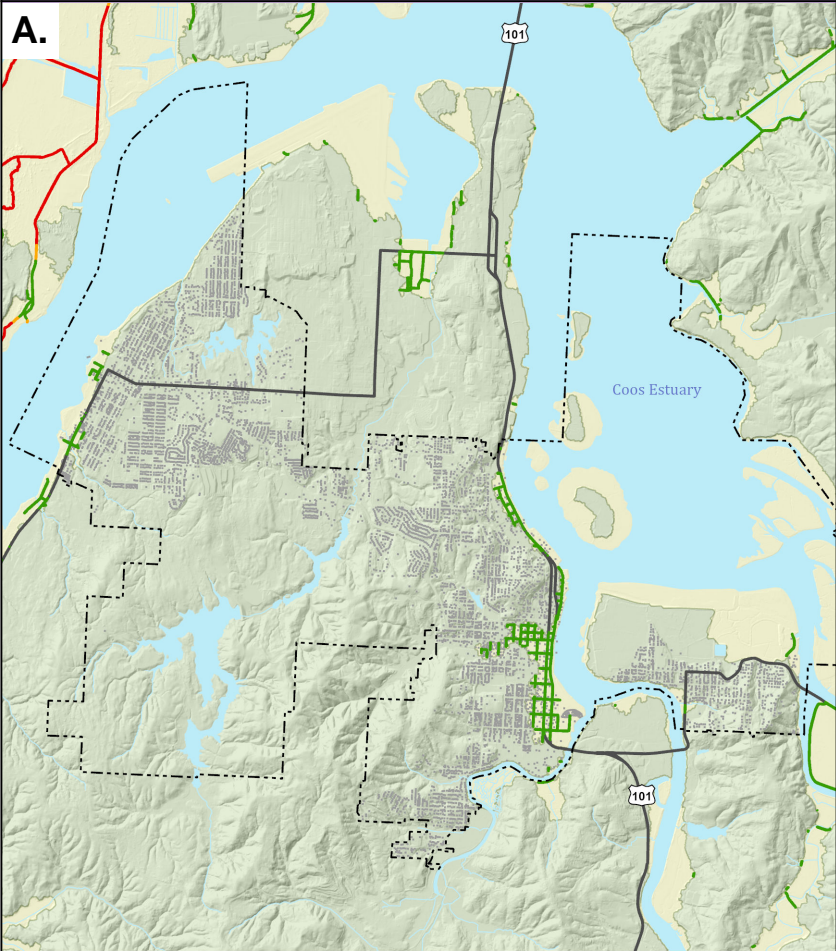
Description	Total
Earthquake Injuries (Entire Community)	80
Tsunami Injuries - Permanent + Temporary	0
Tsunami Fatalities - Permanent	0
Tsunami Fatalities - Temporary @ ~100% occupancy	0
Displaced Population - Permanent	560
Displaced Population - Permanent + Temporary	710



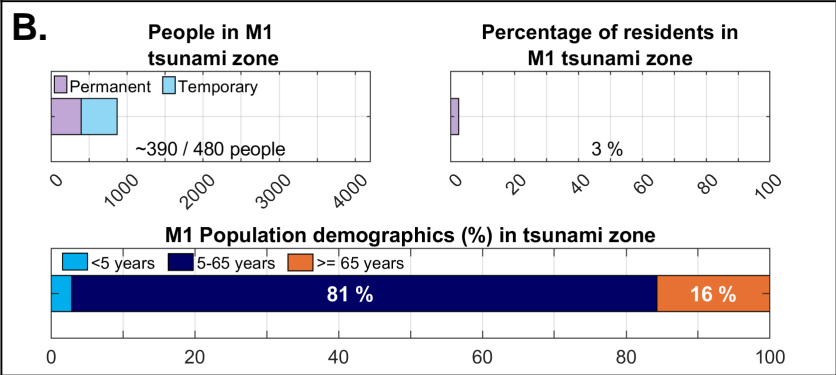
Coos Bay - M1

Casualty estimates assume a MODERATE WALK travel speed (4 ft per second)

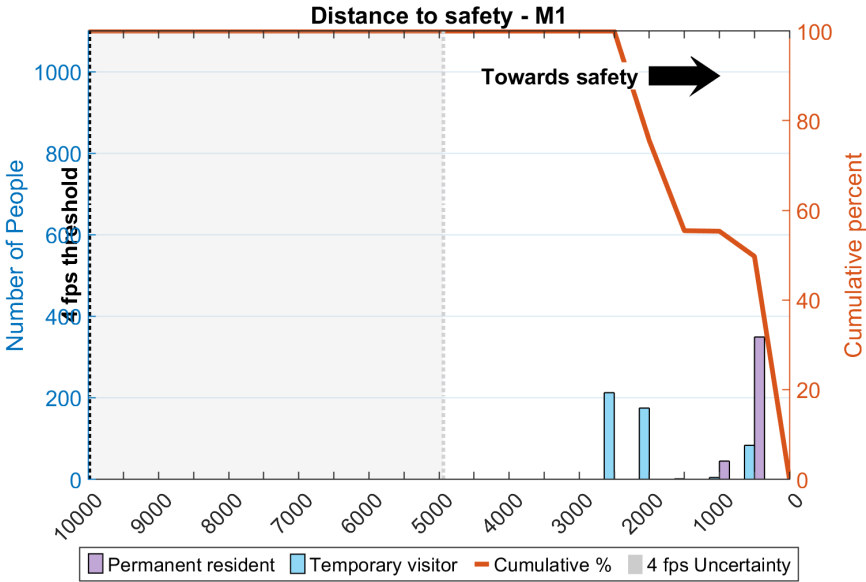
A.



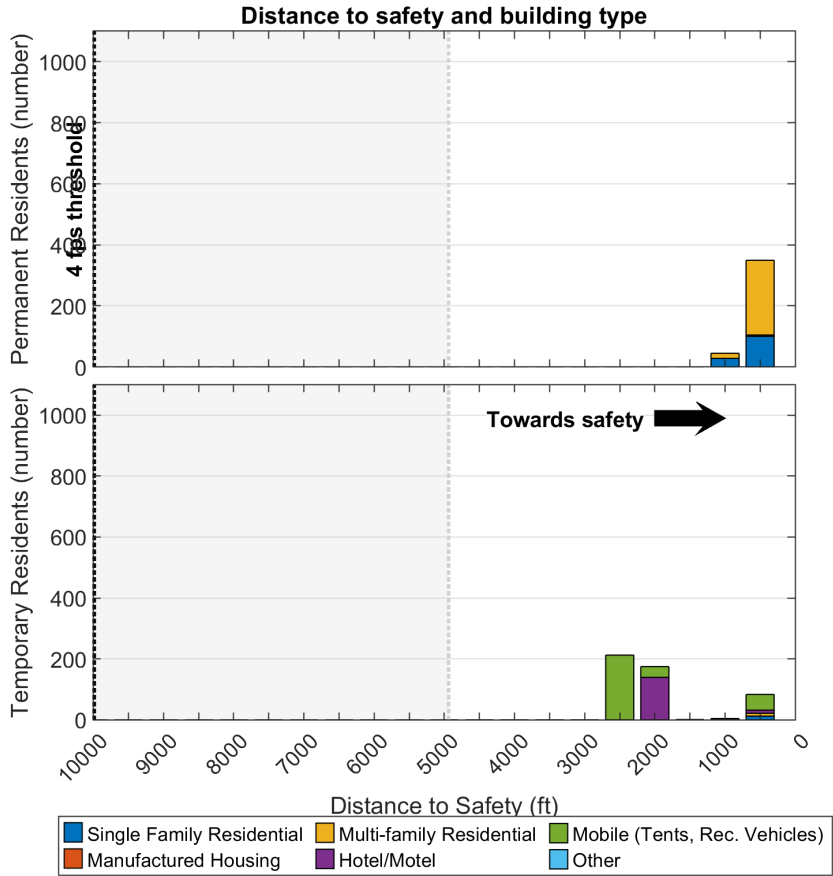
B.



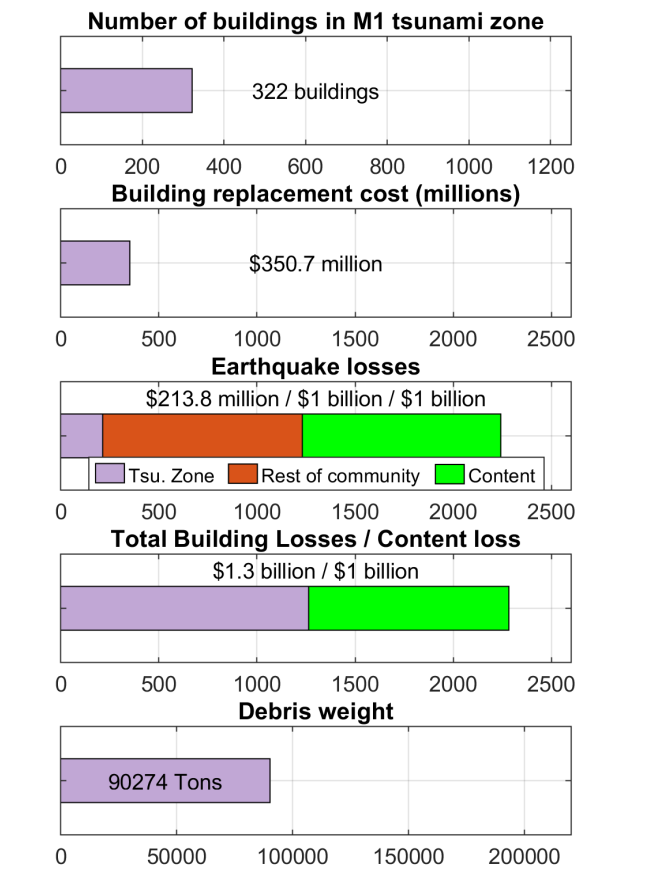
C.



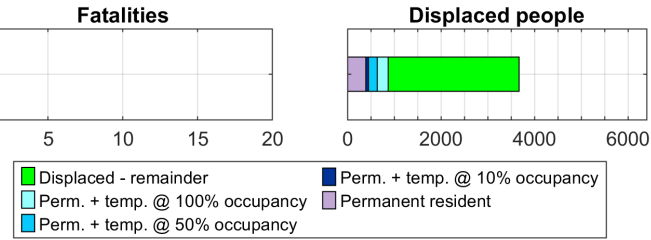
D.



E.



F.

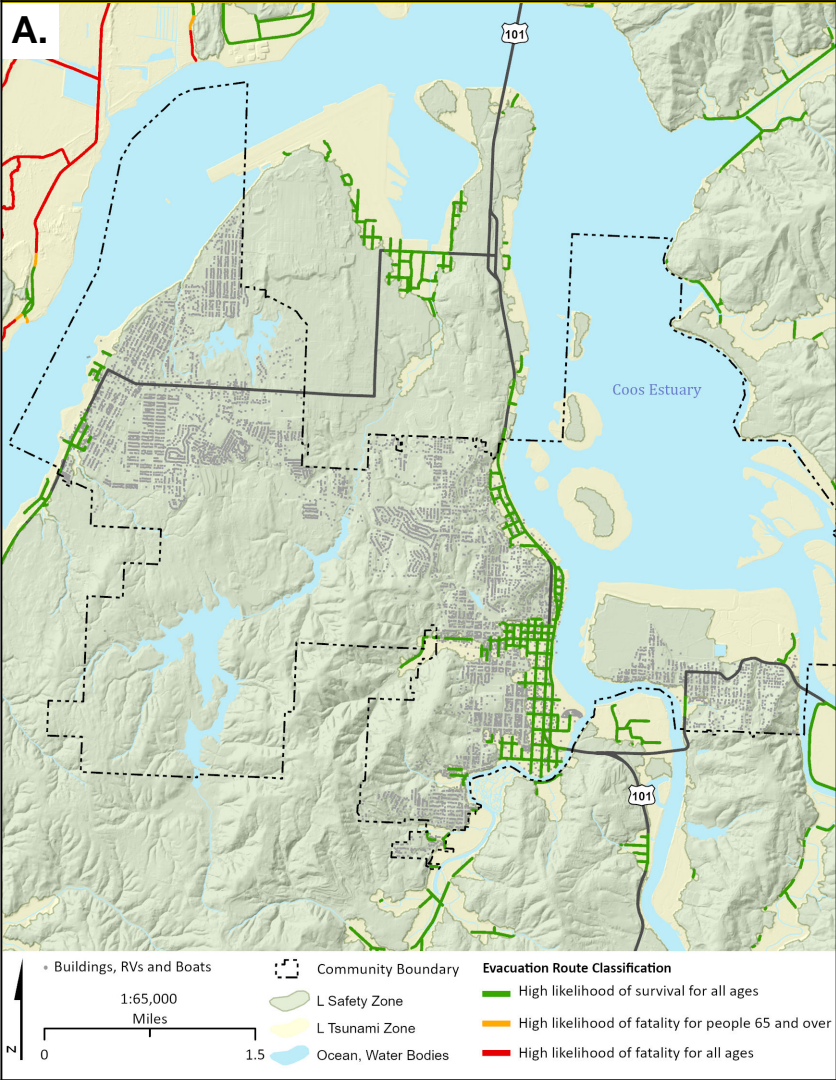


Description	Total
Earthquake Injuries (Entire Community)	490
Tsunami Injuries - Permanent + Temporary	0
Tsunami Fatalities - Permanent	0
Tsunami Fatalities - Temporary @ ~100% occupancy	0
Displaced Population - Permanent	2,750
Displaced Population - Permanent + Temporary	3,670

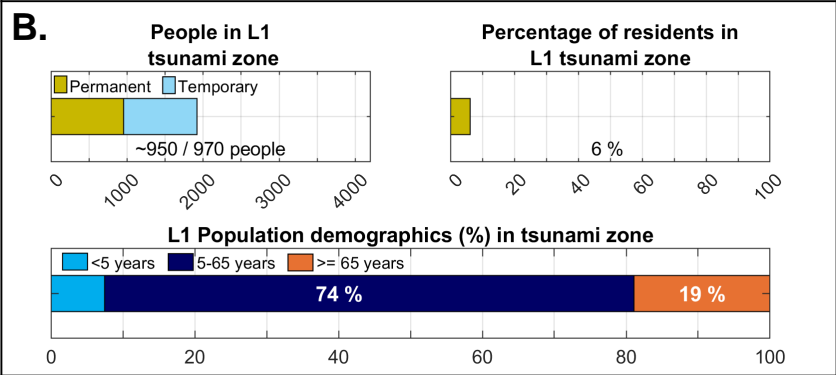
Coos Bay - L1

Casualty estimates assume a MODERATE WALK travel speed (4 ft per second)

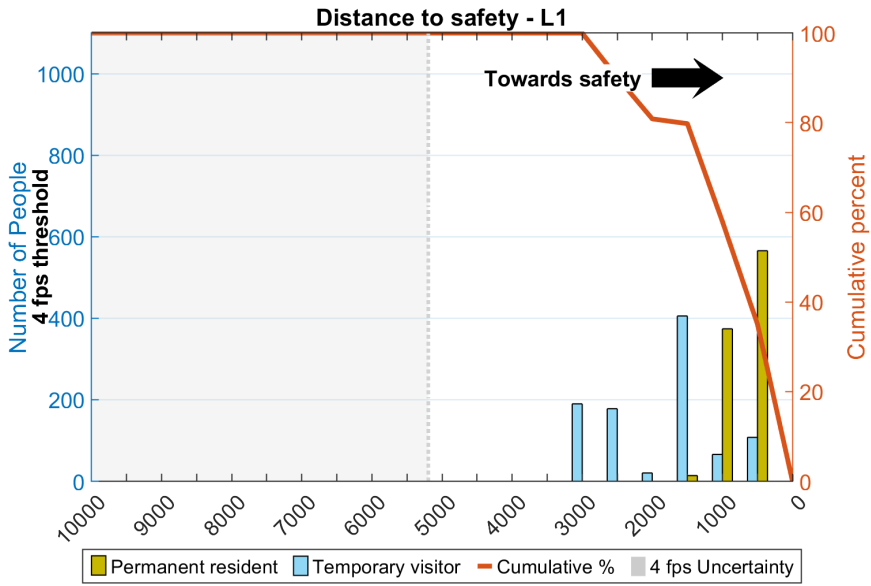
A.



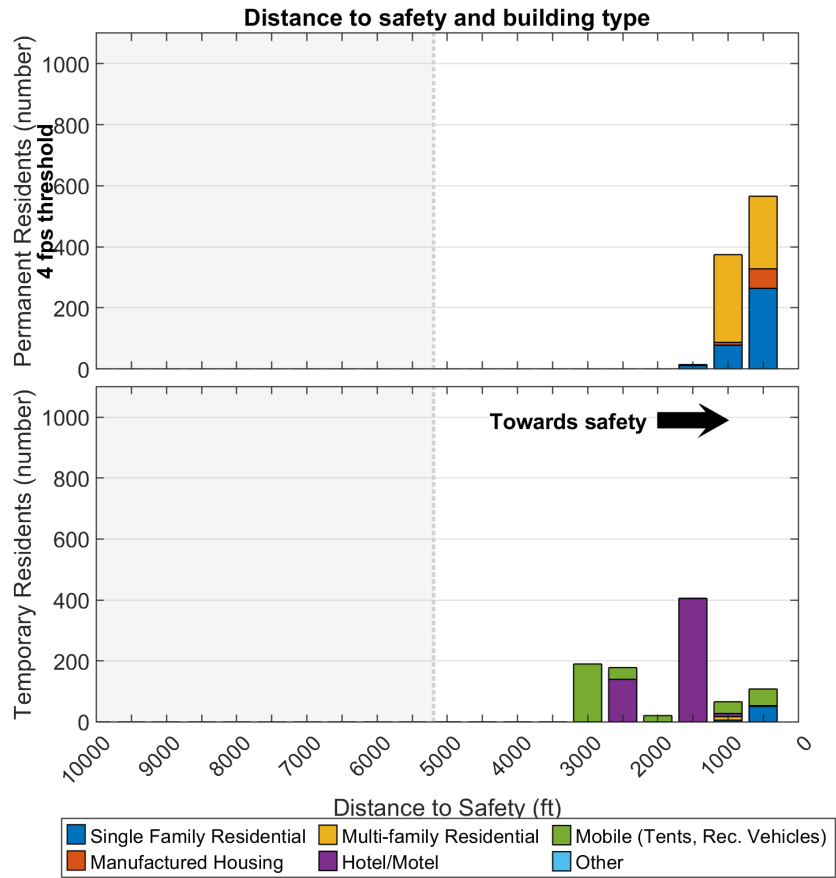
B.



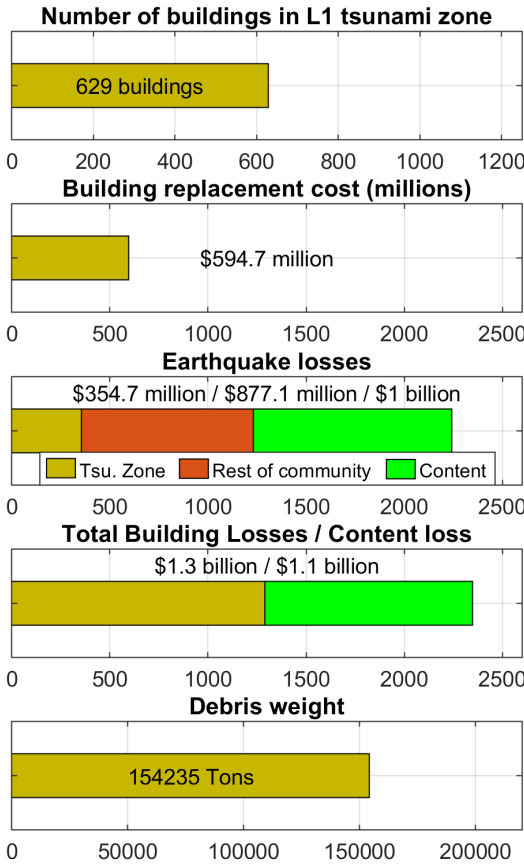
C.



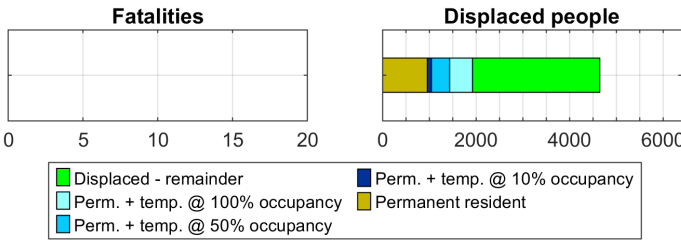
D.



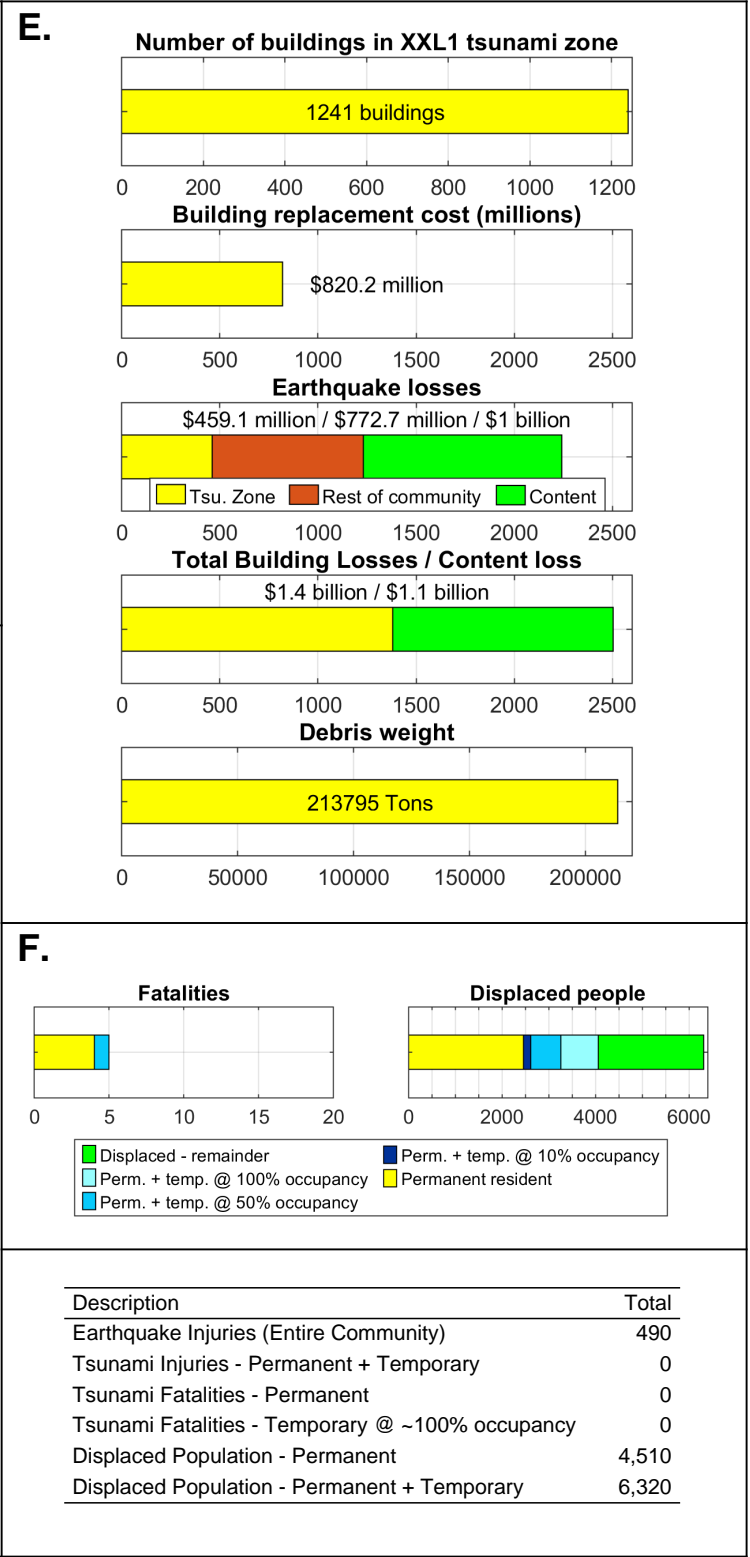
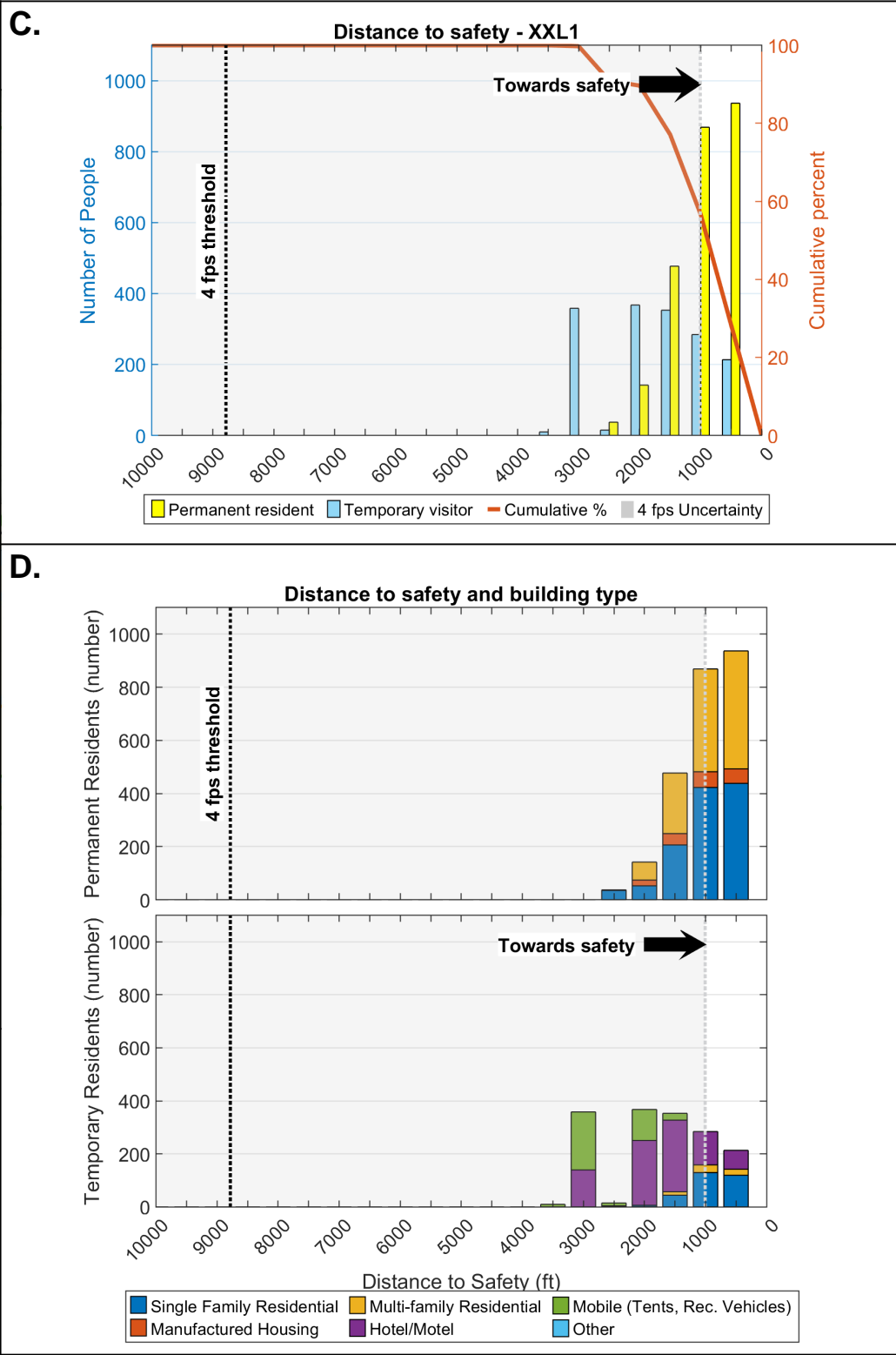
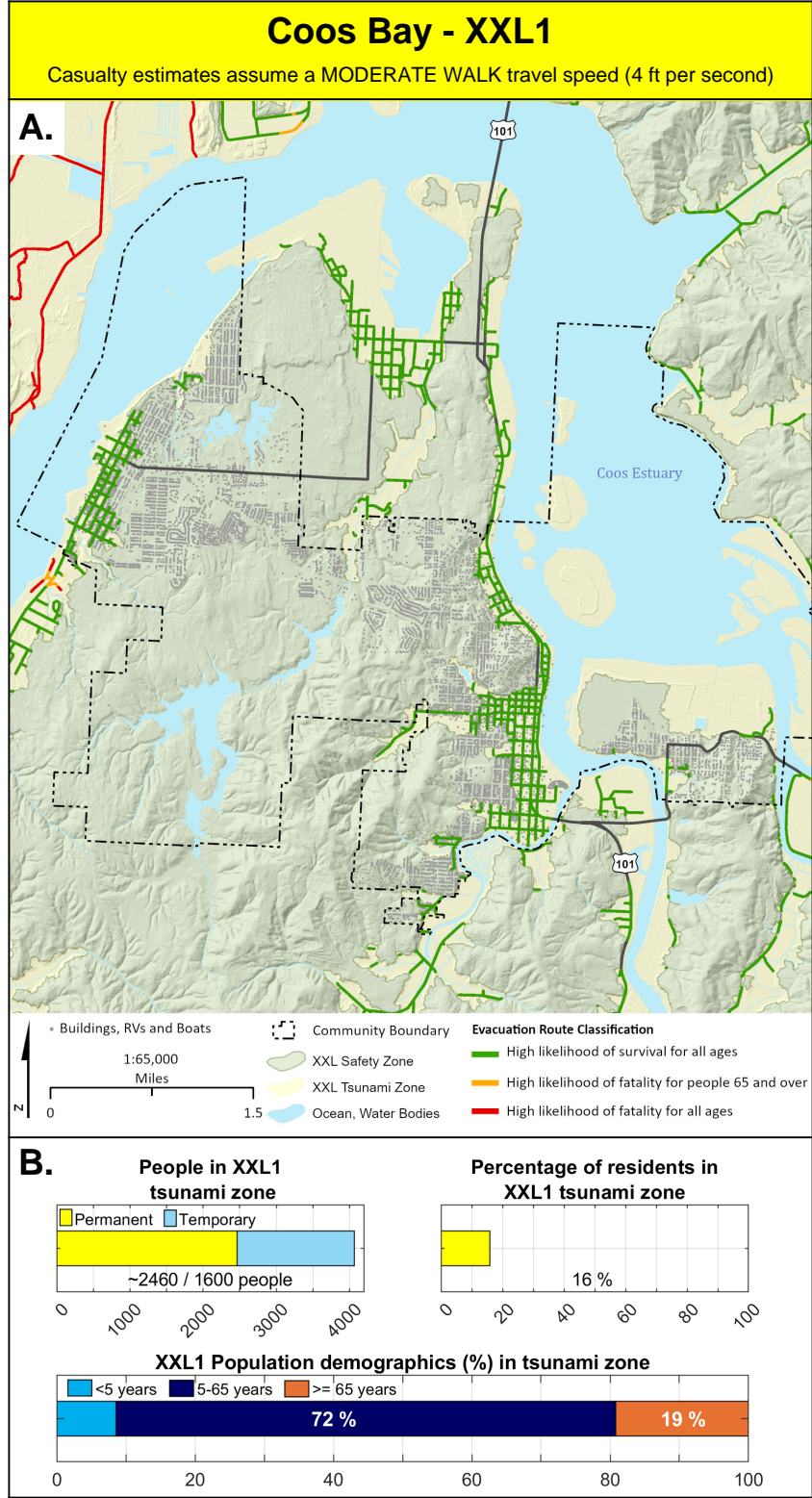
E.

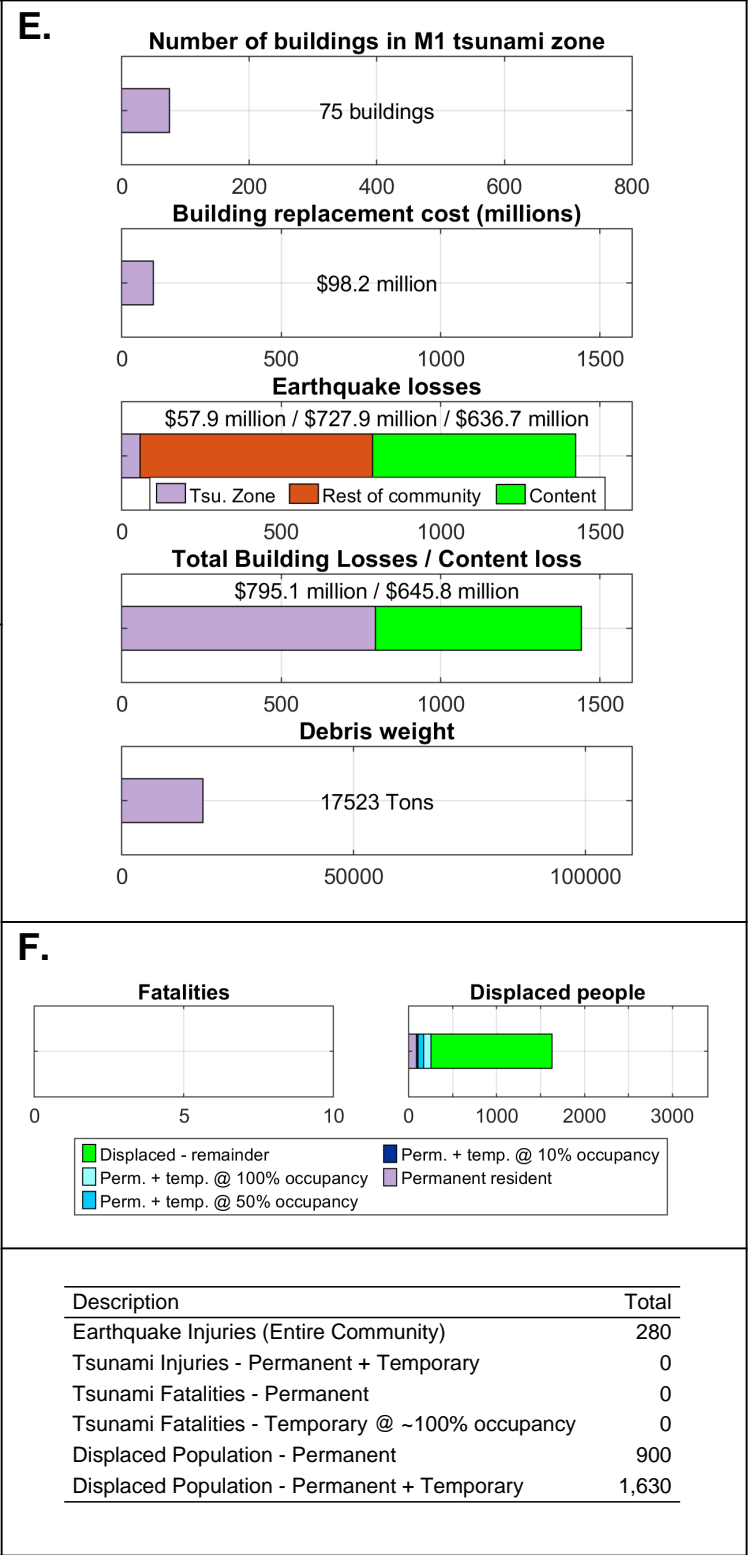
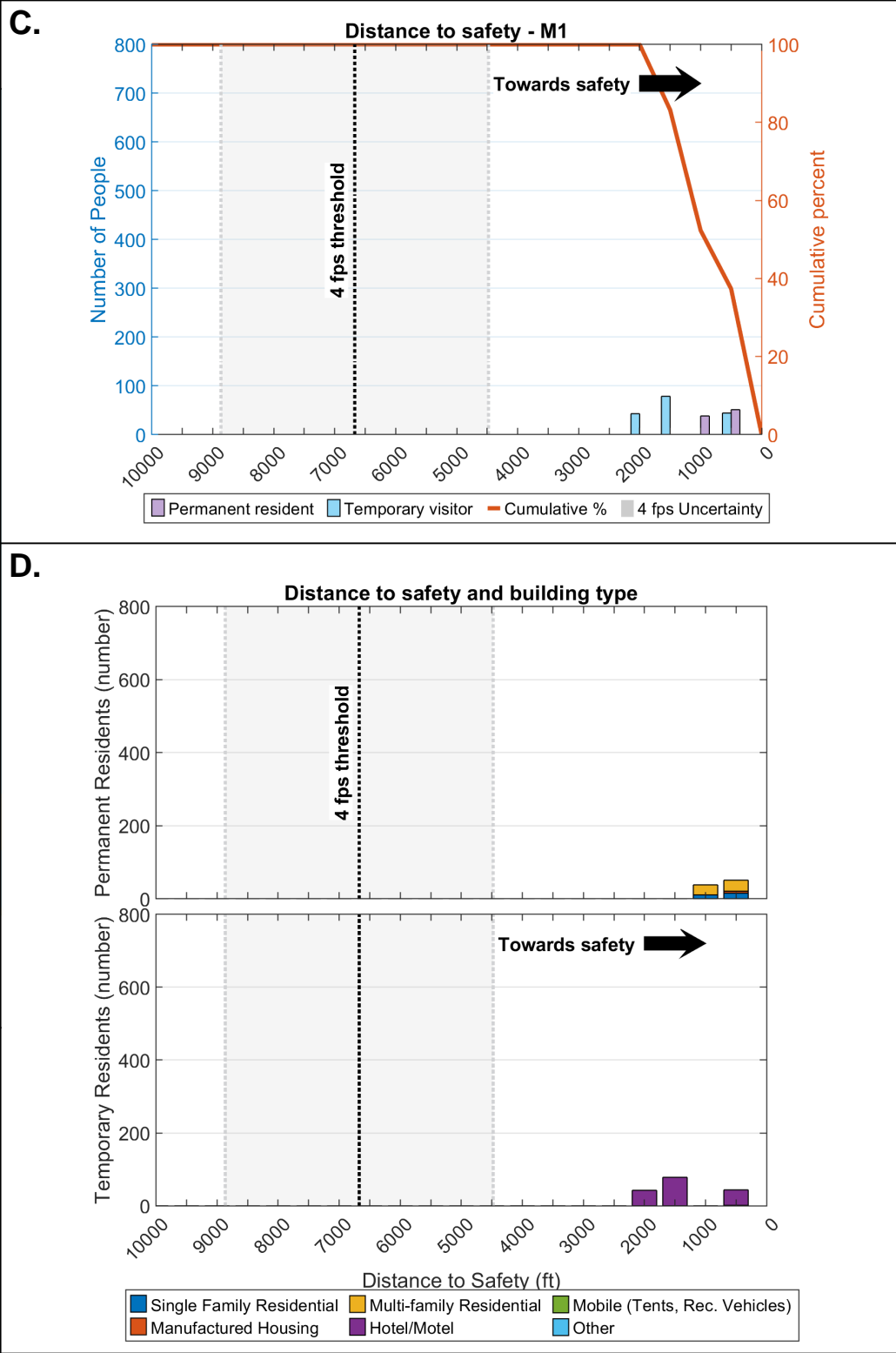
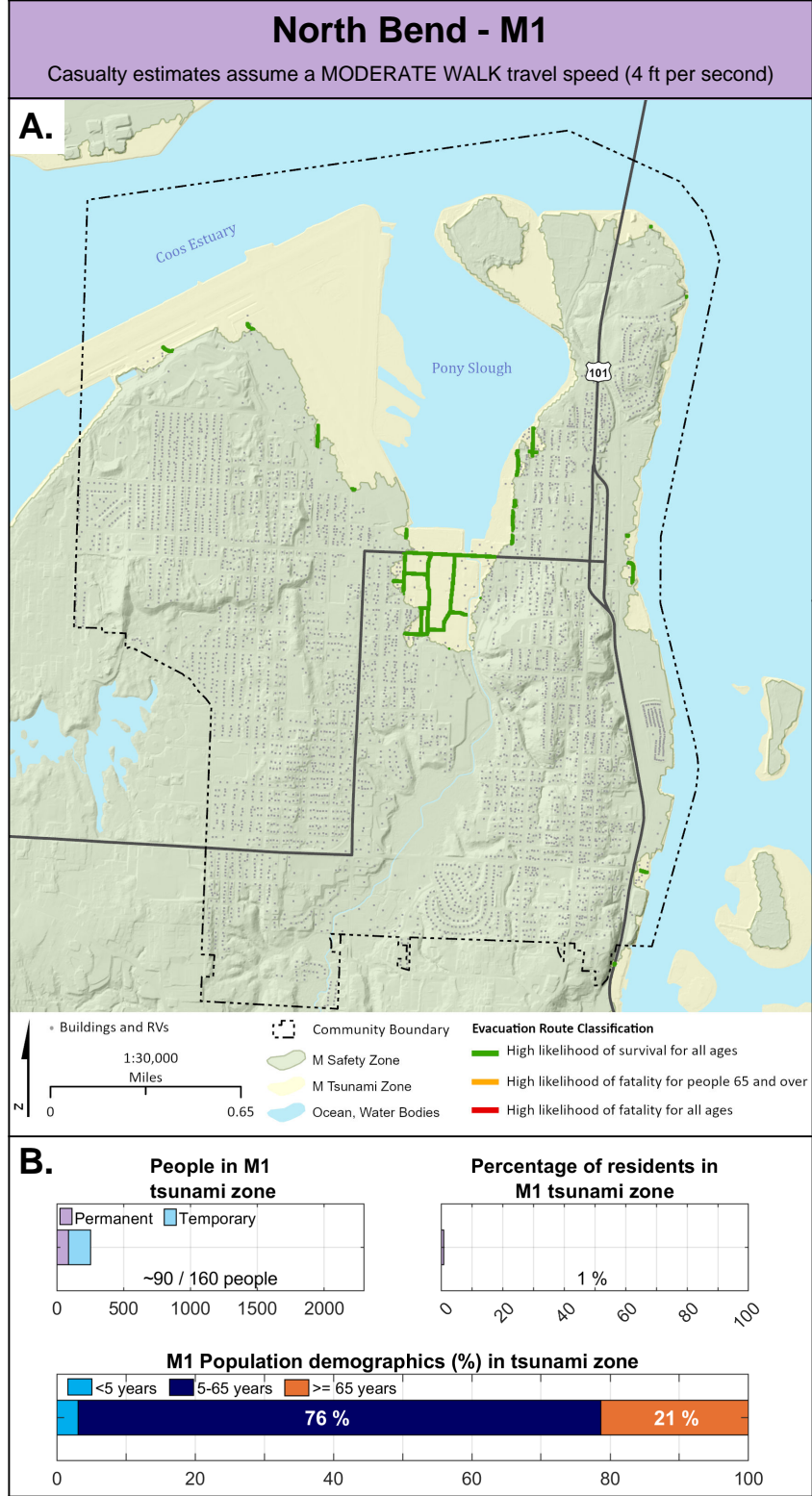


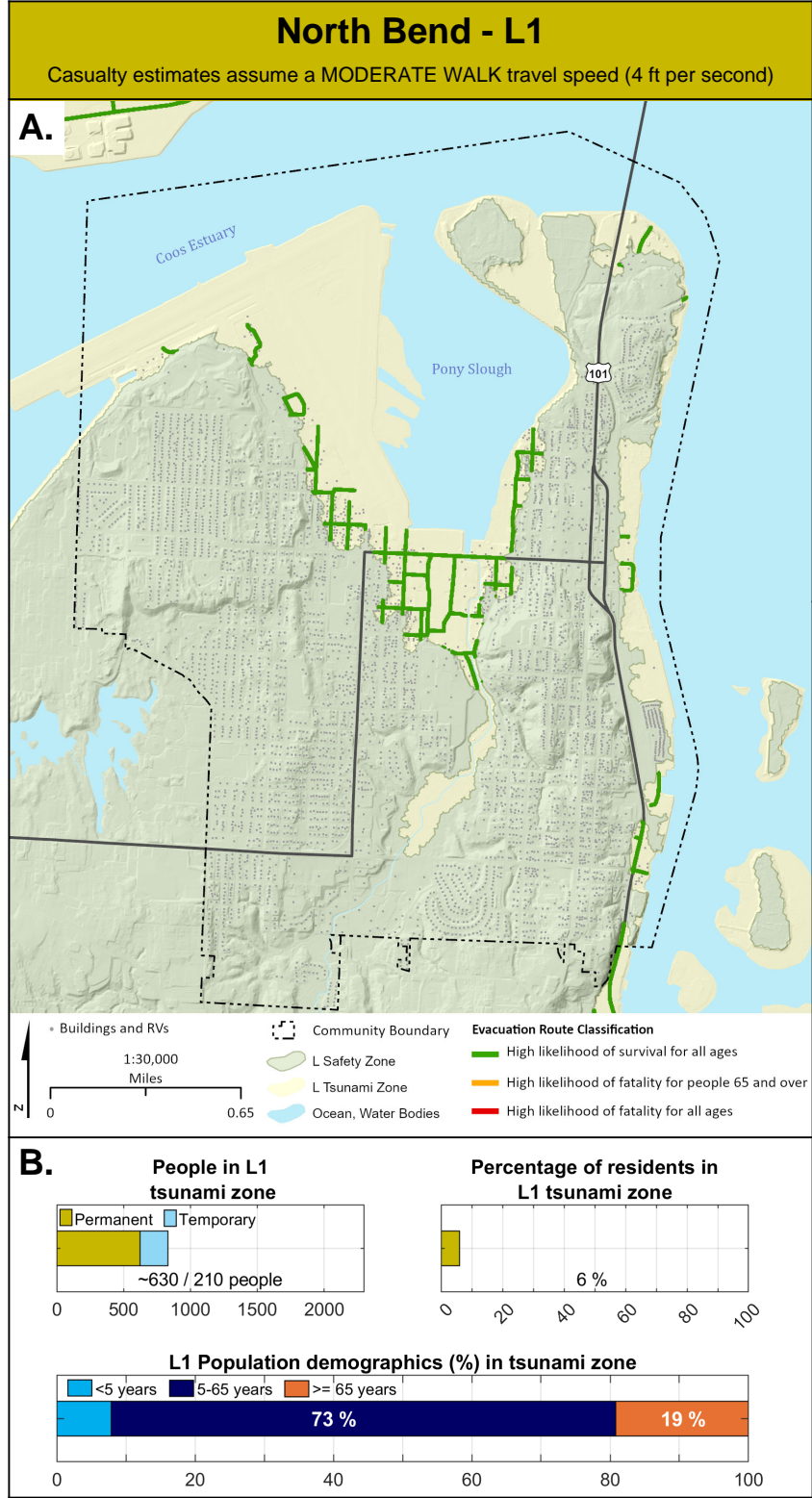
F.

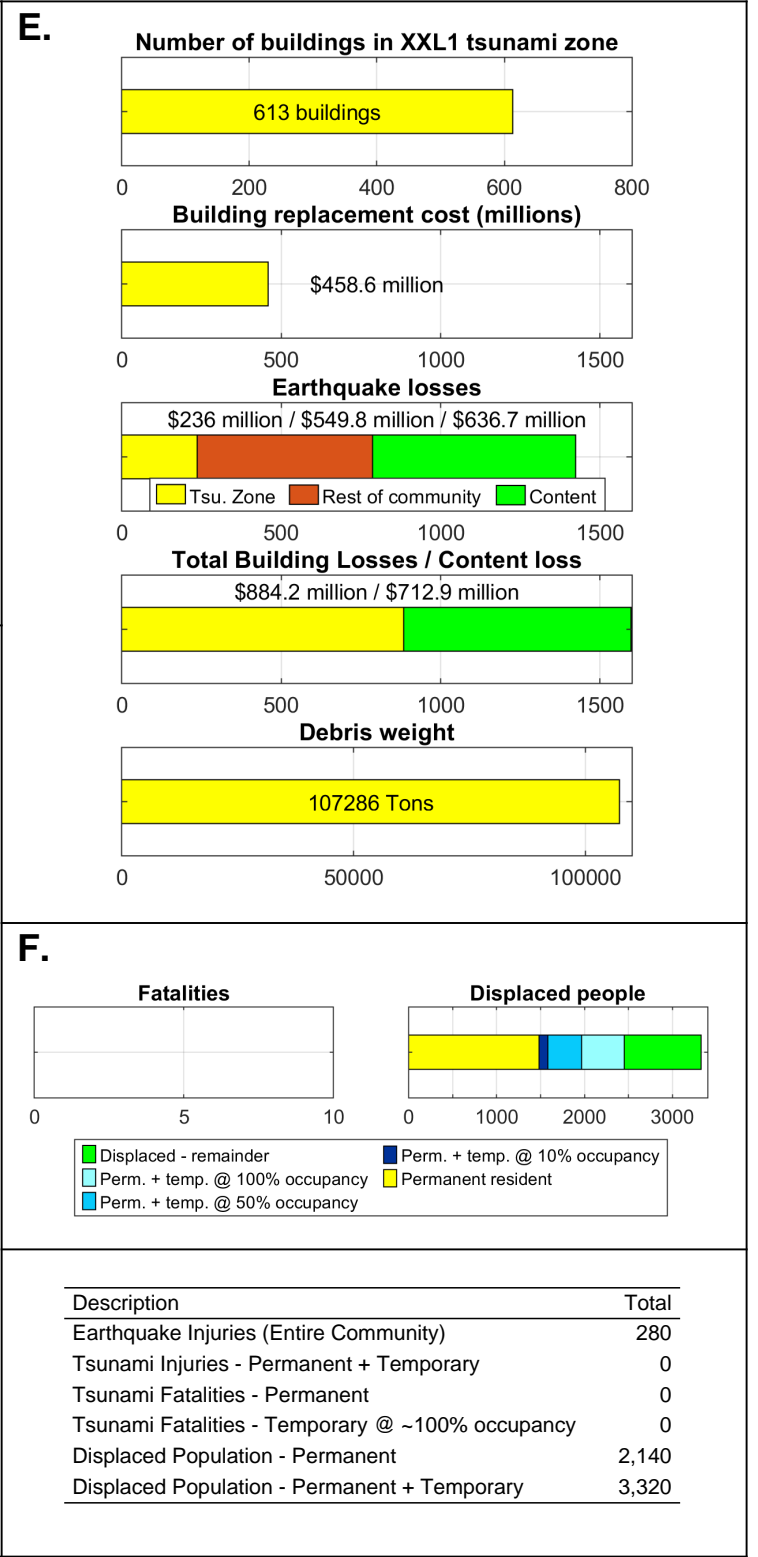
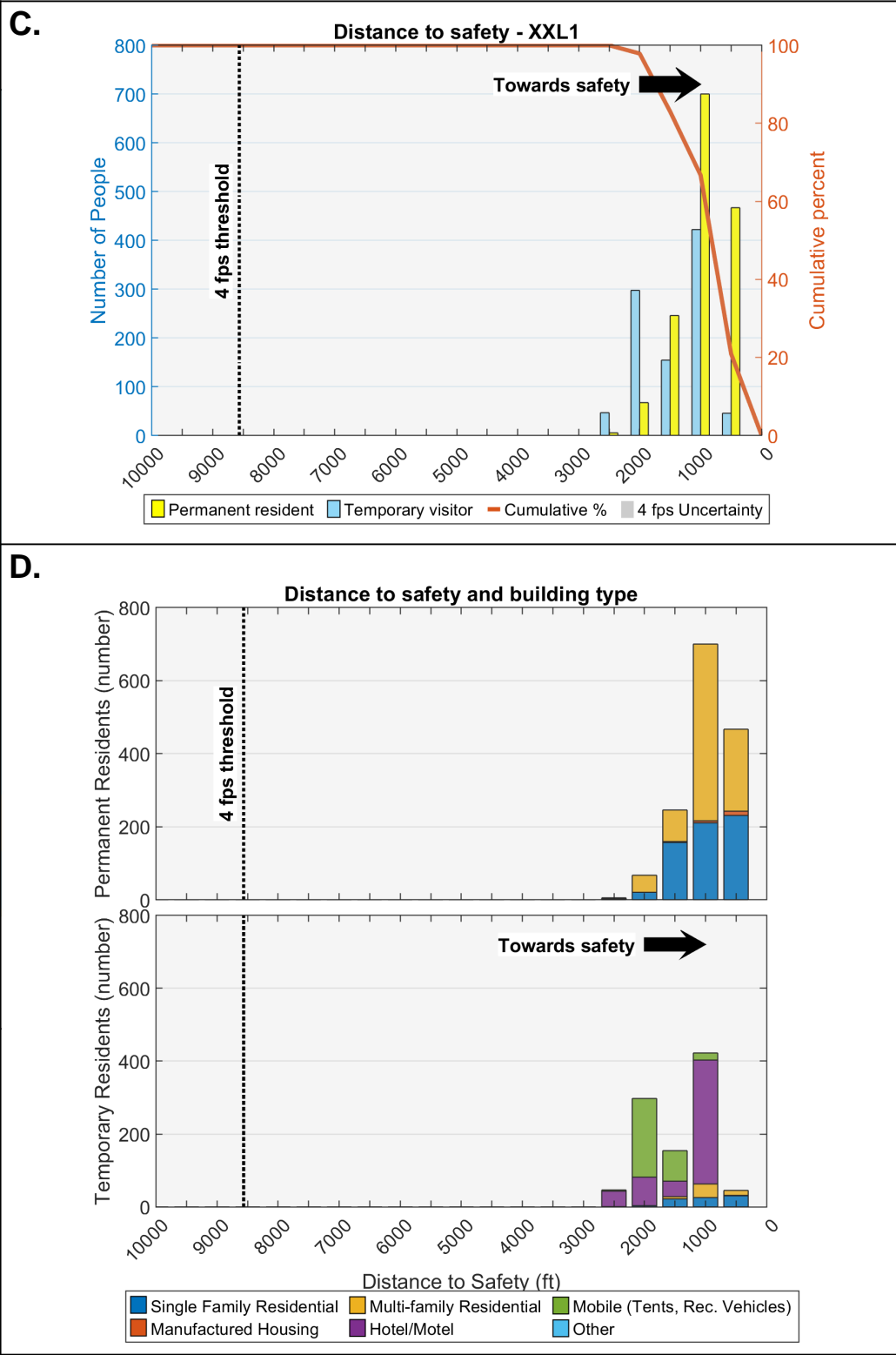
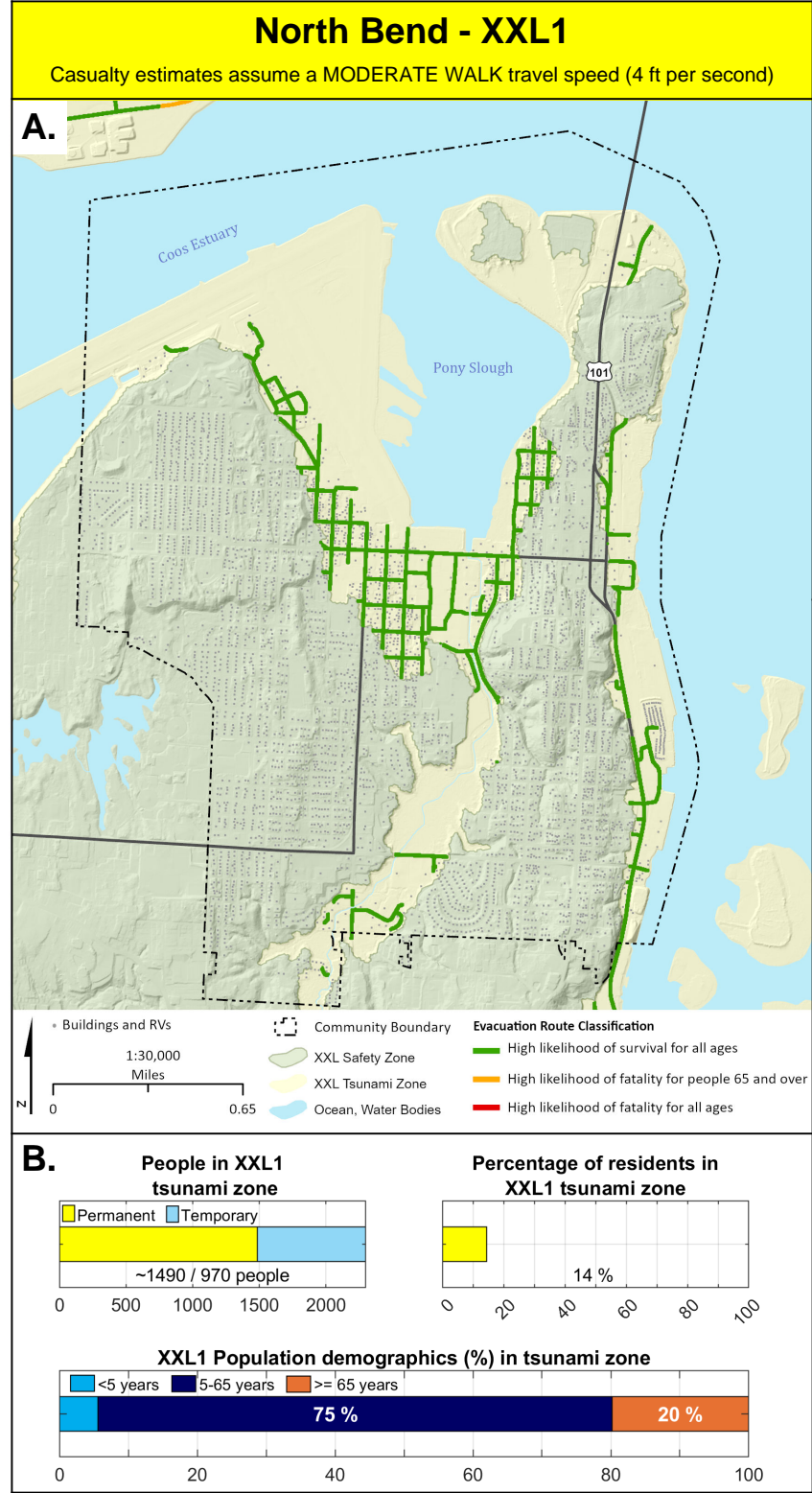


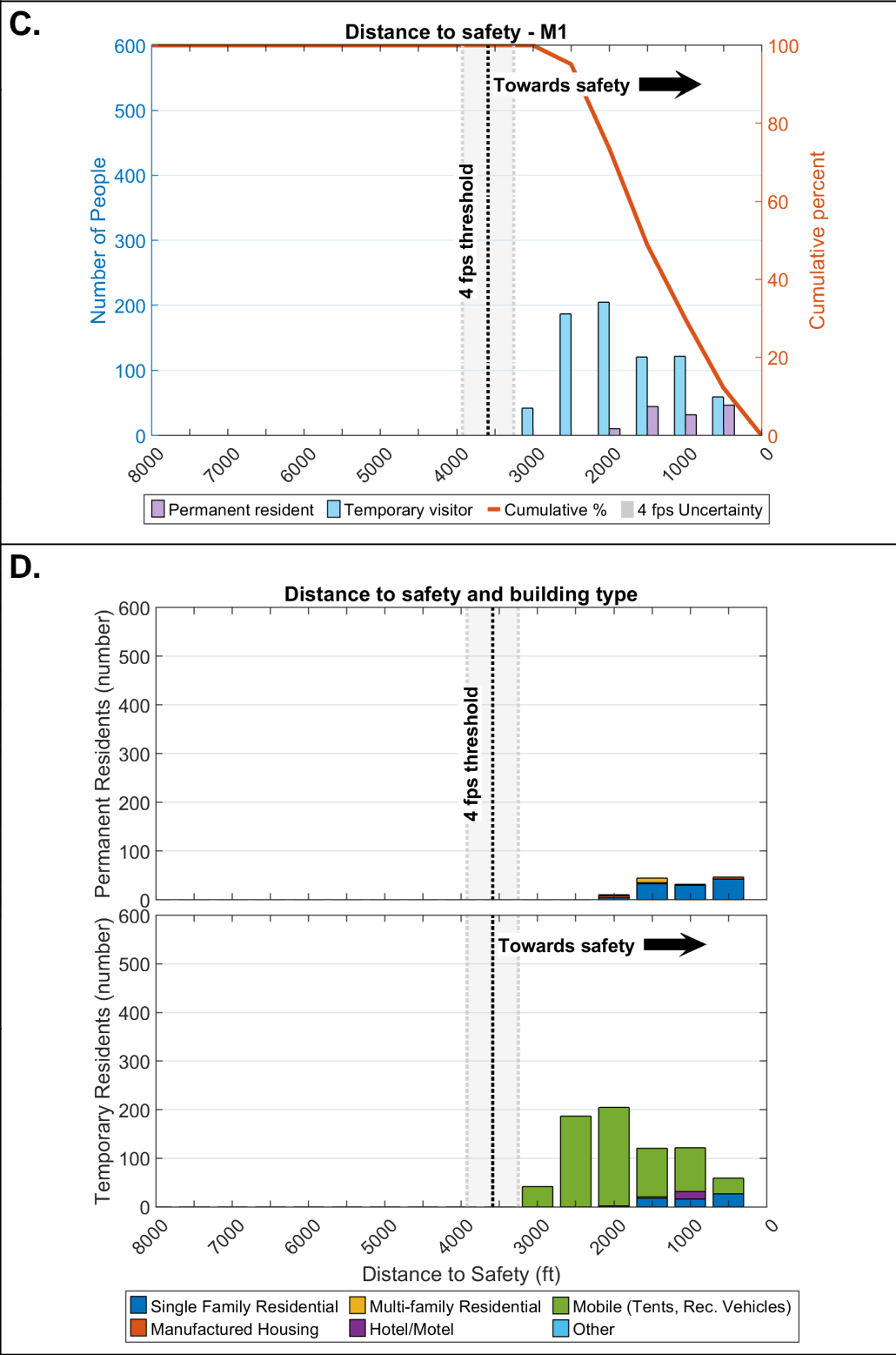
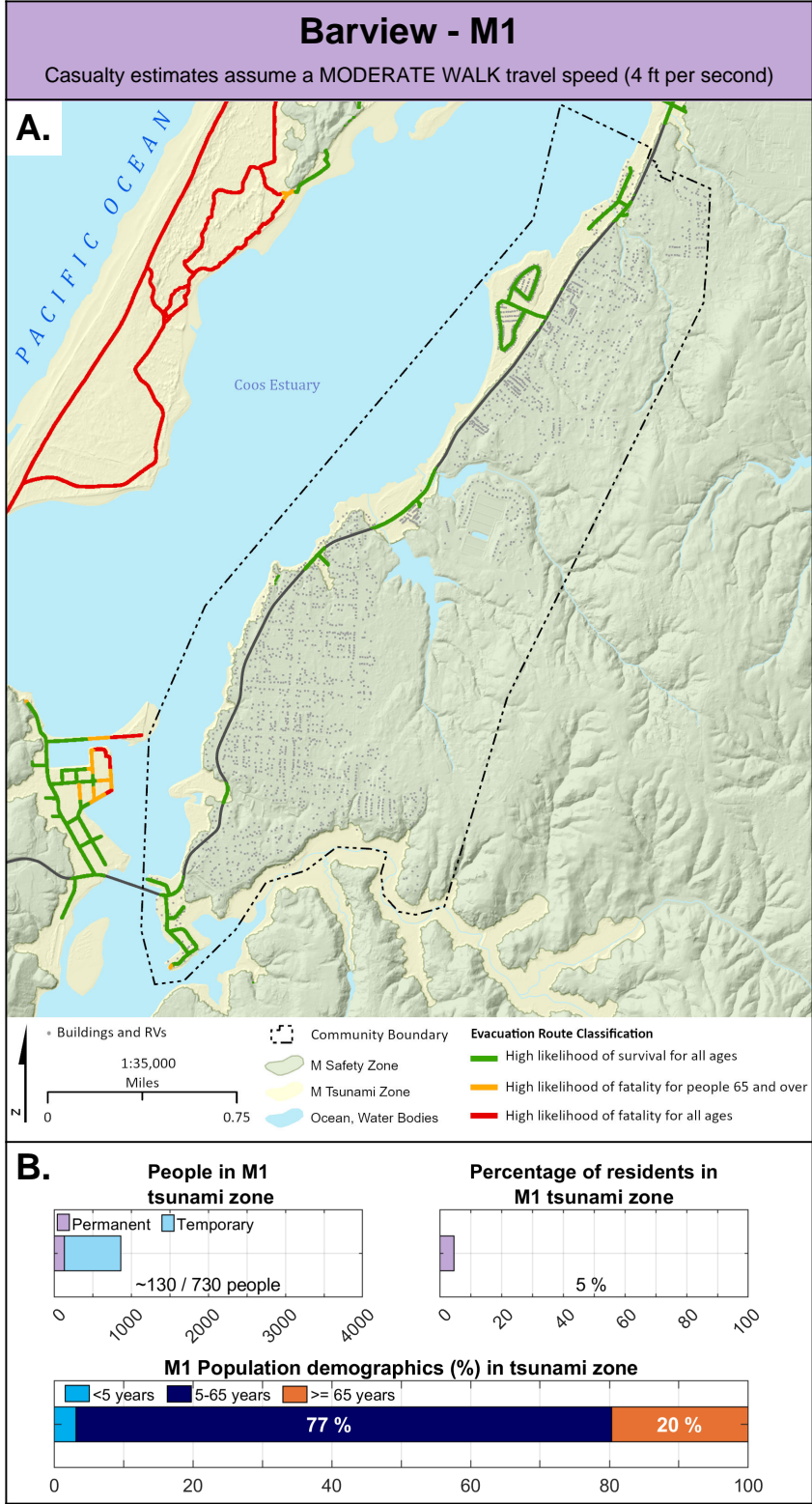
Description	Total
Earthquake Injuries (Entire Community)	490
Tsunami Injuries - Permanent + Temporary	0
Tsunami Fatalities - Permanent	0
Tsunami Fatalities - Temporary @ ~100% occupancy	0
Displaced Population - Permanent	3,240
Displaced Population - Permanent + Temporary	4,650

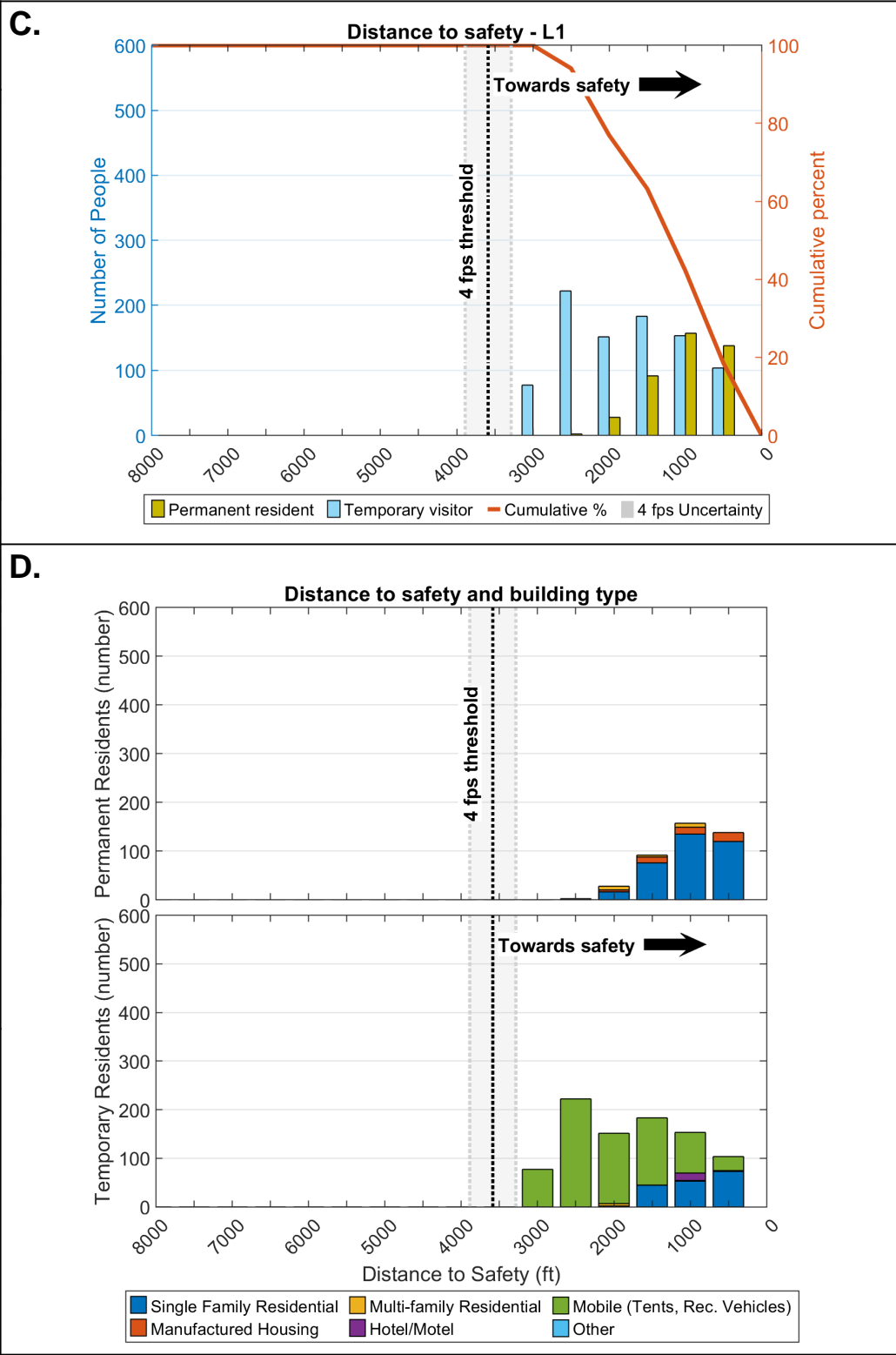
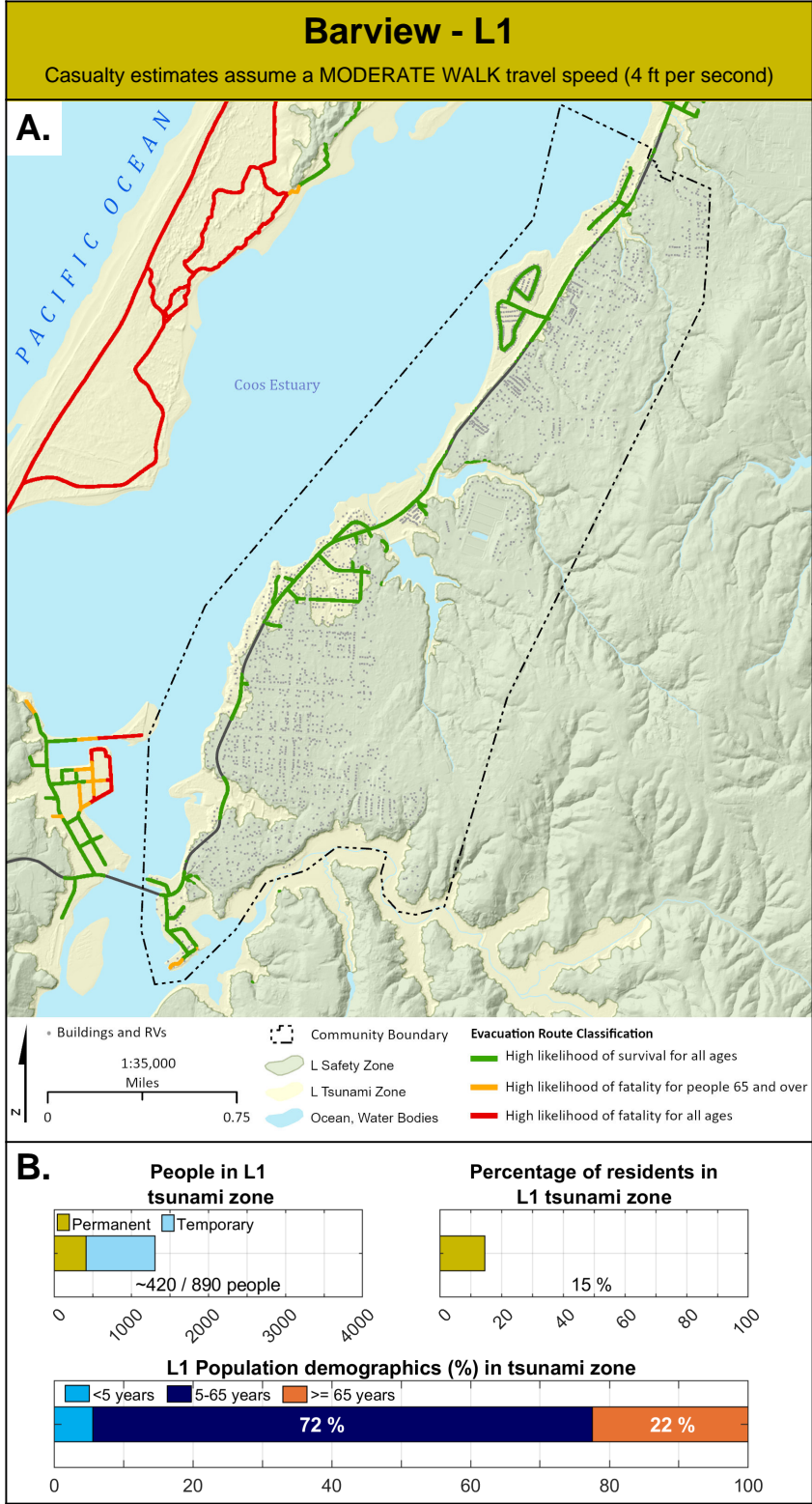


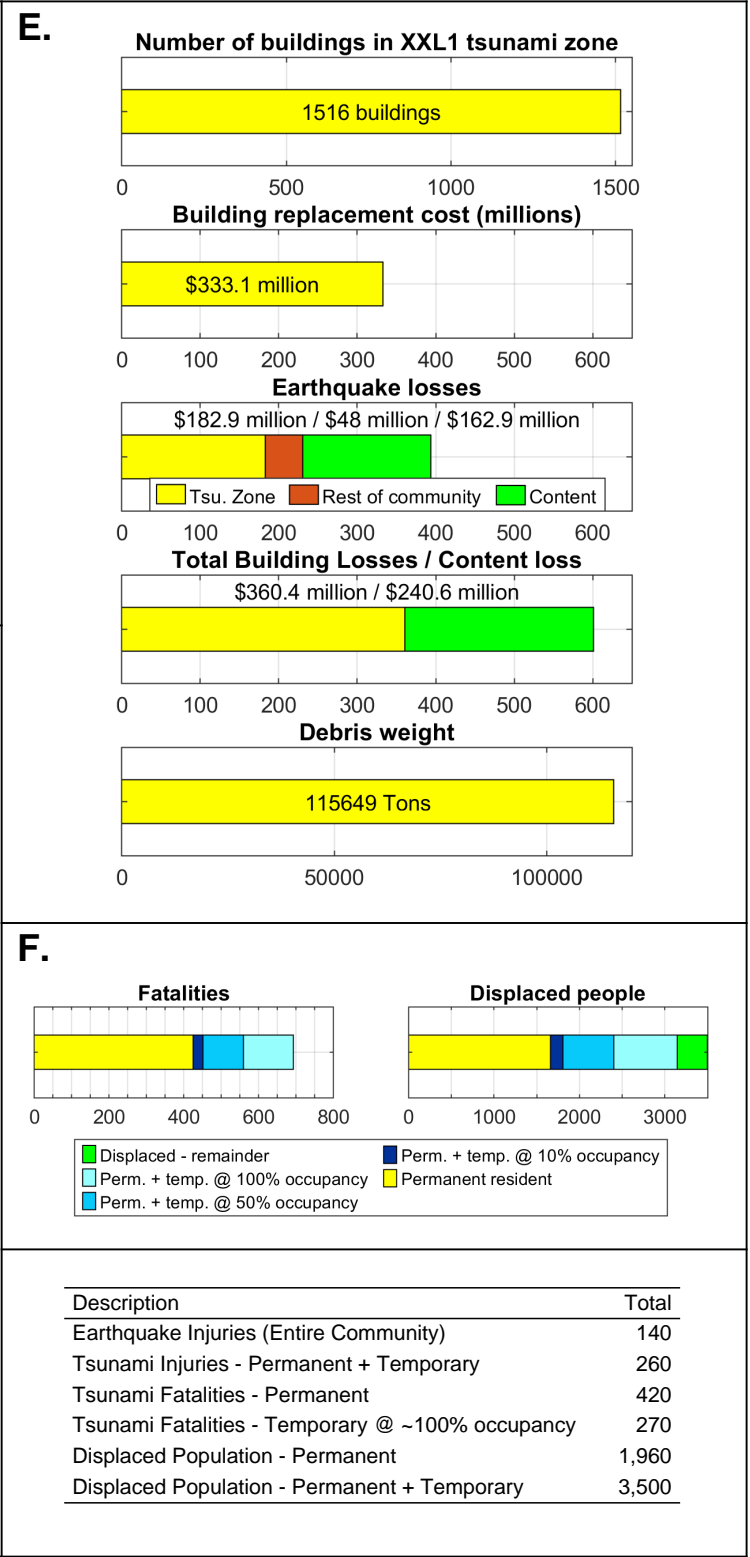
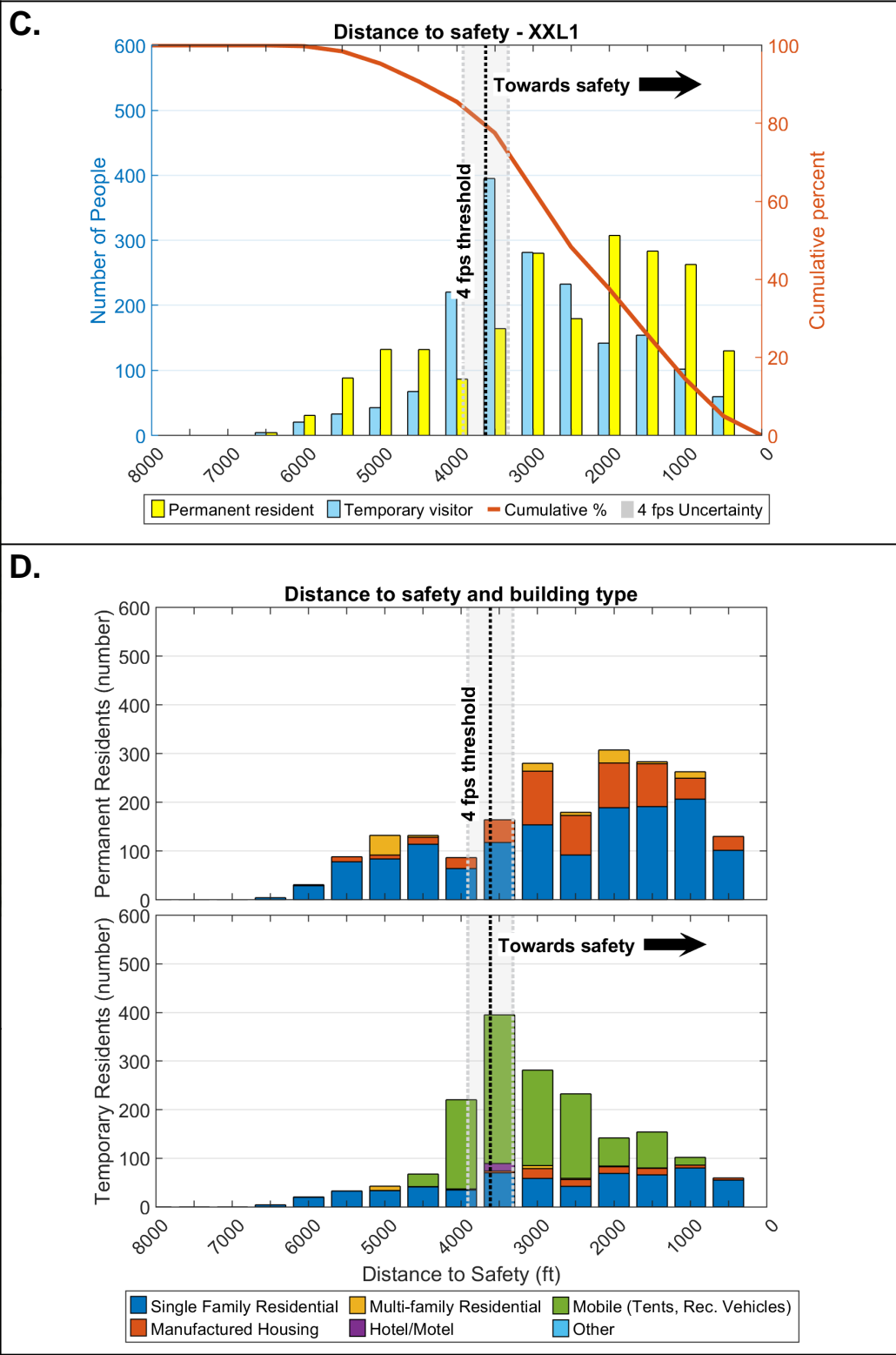
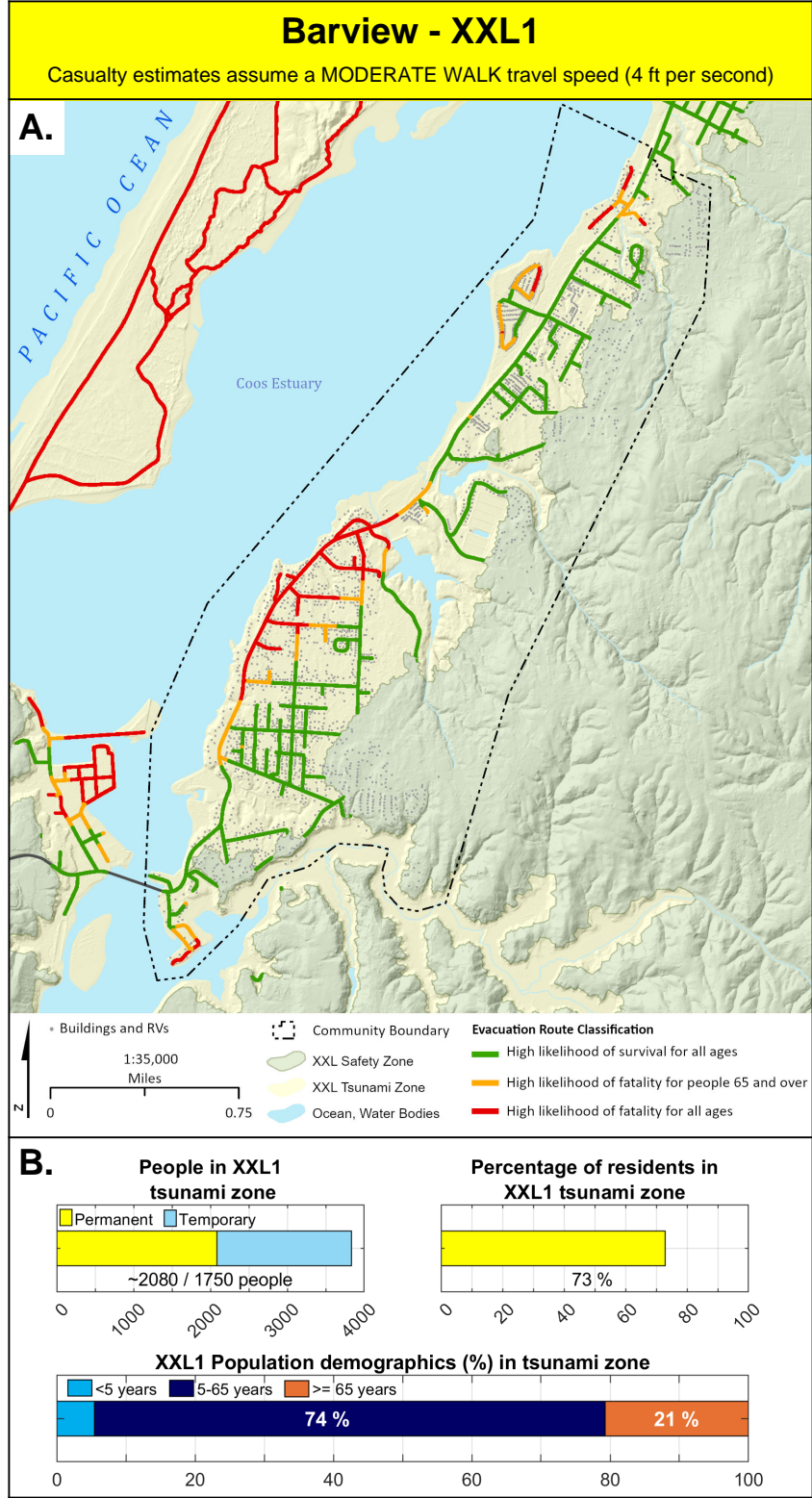








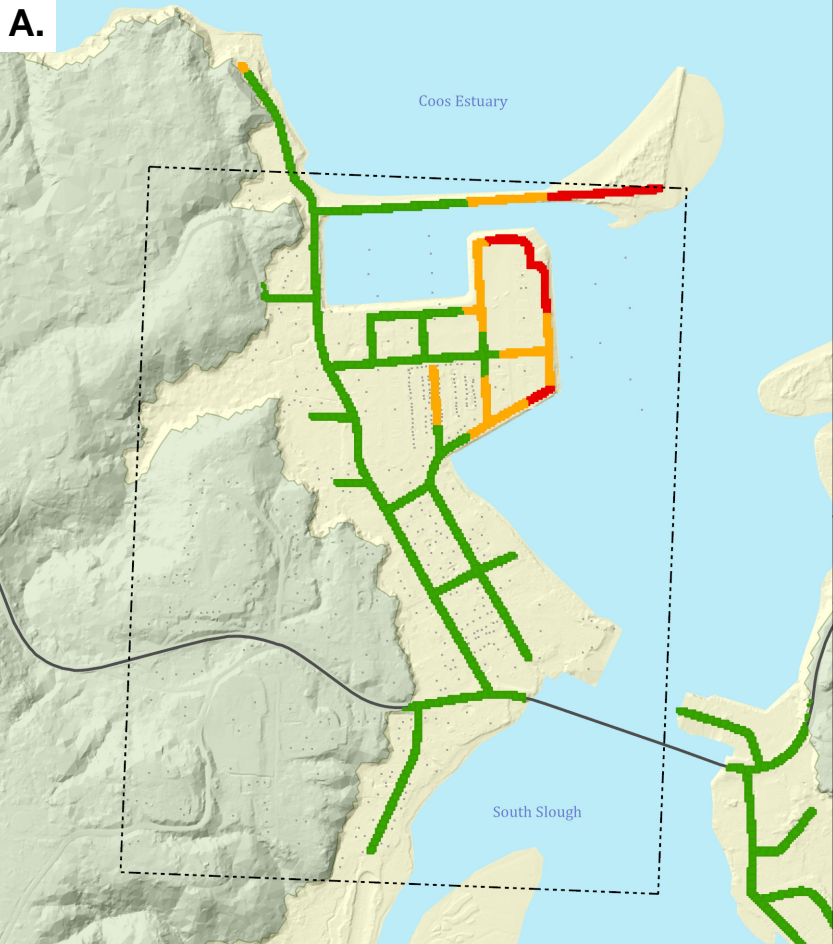




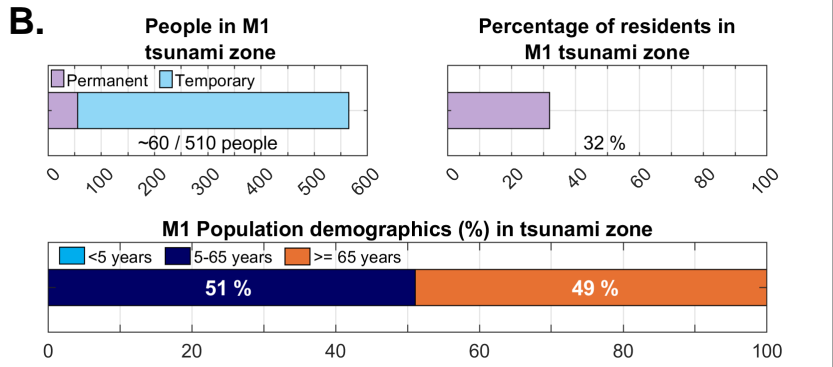
Charleston - M1

Casualty estimates assume a MODERATE WALK travel speed (4 ft per second)

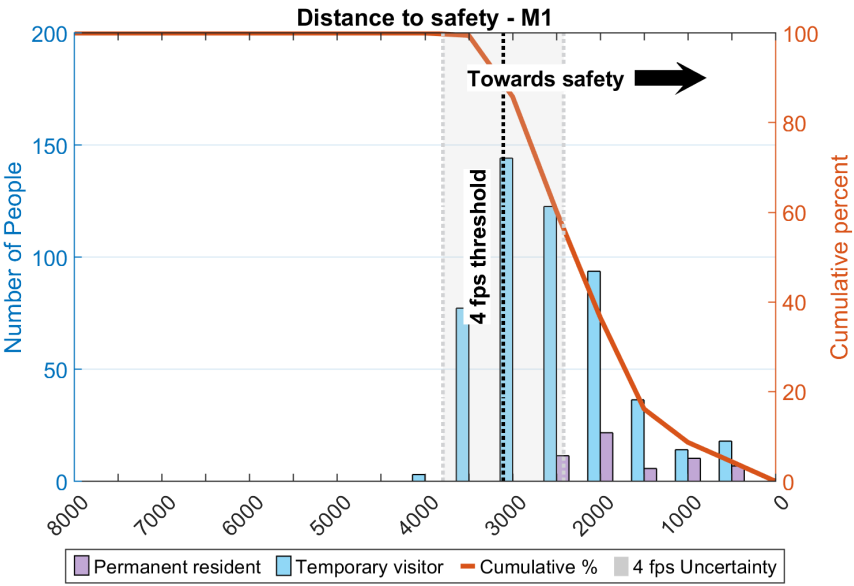
A.



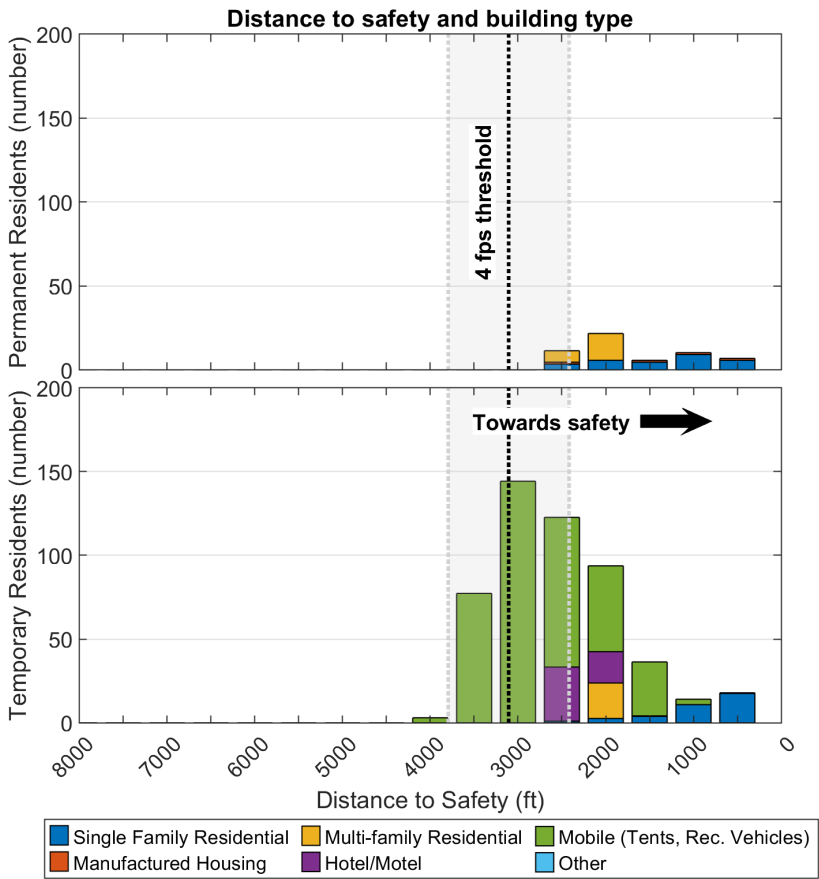
B.



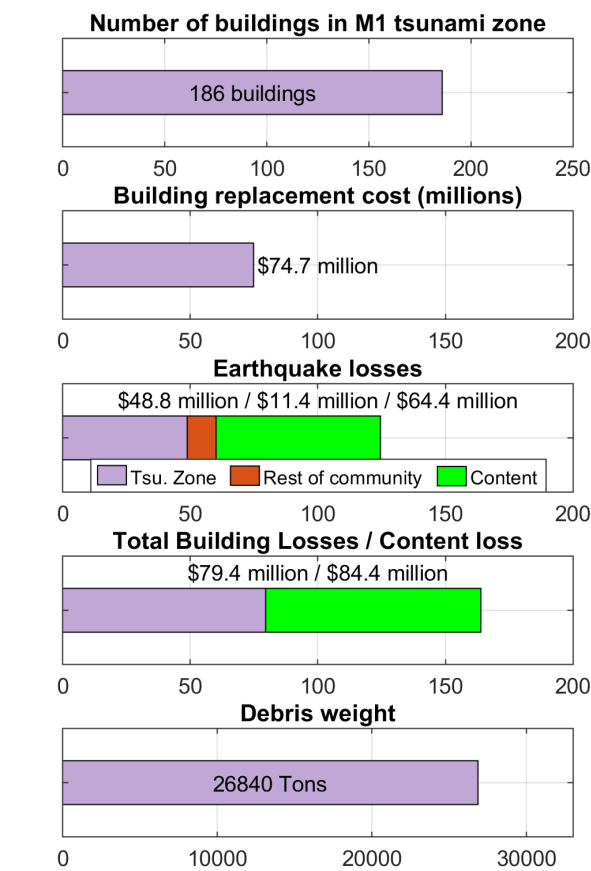
C.



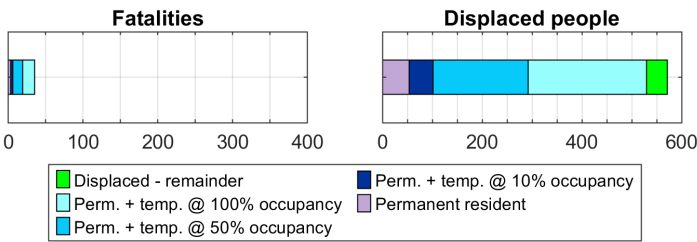
D.



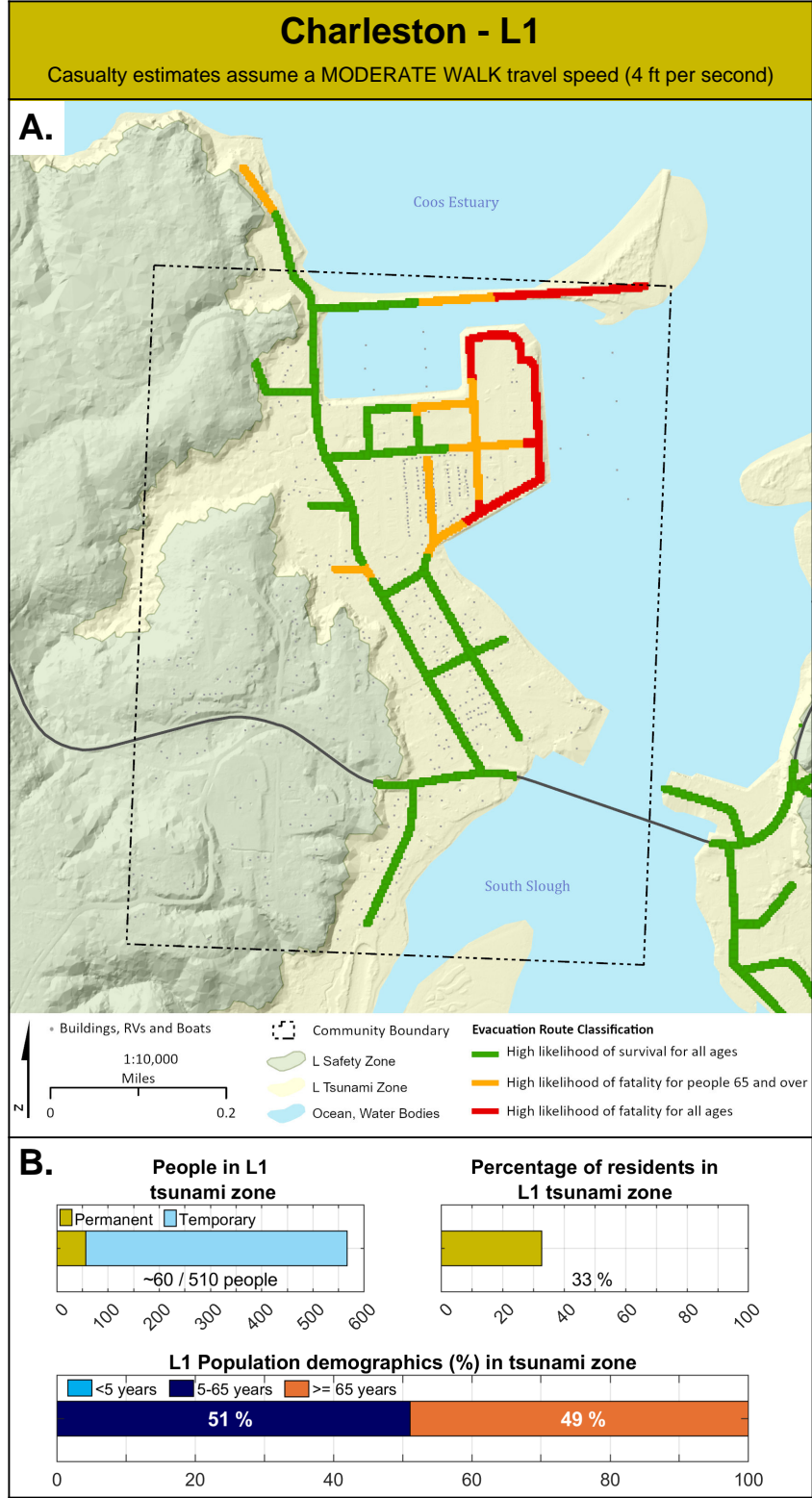
E.

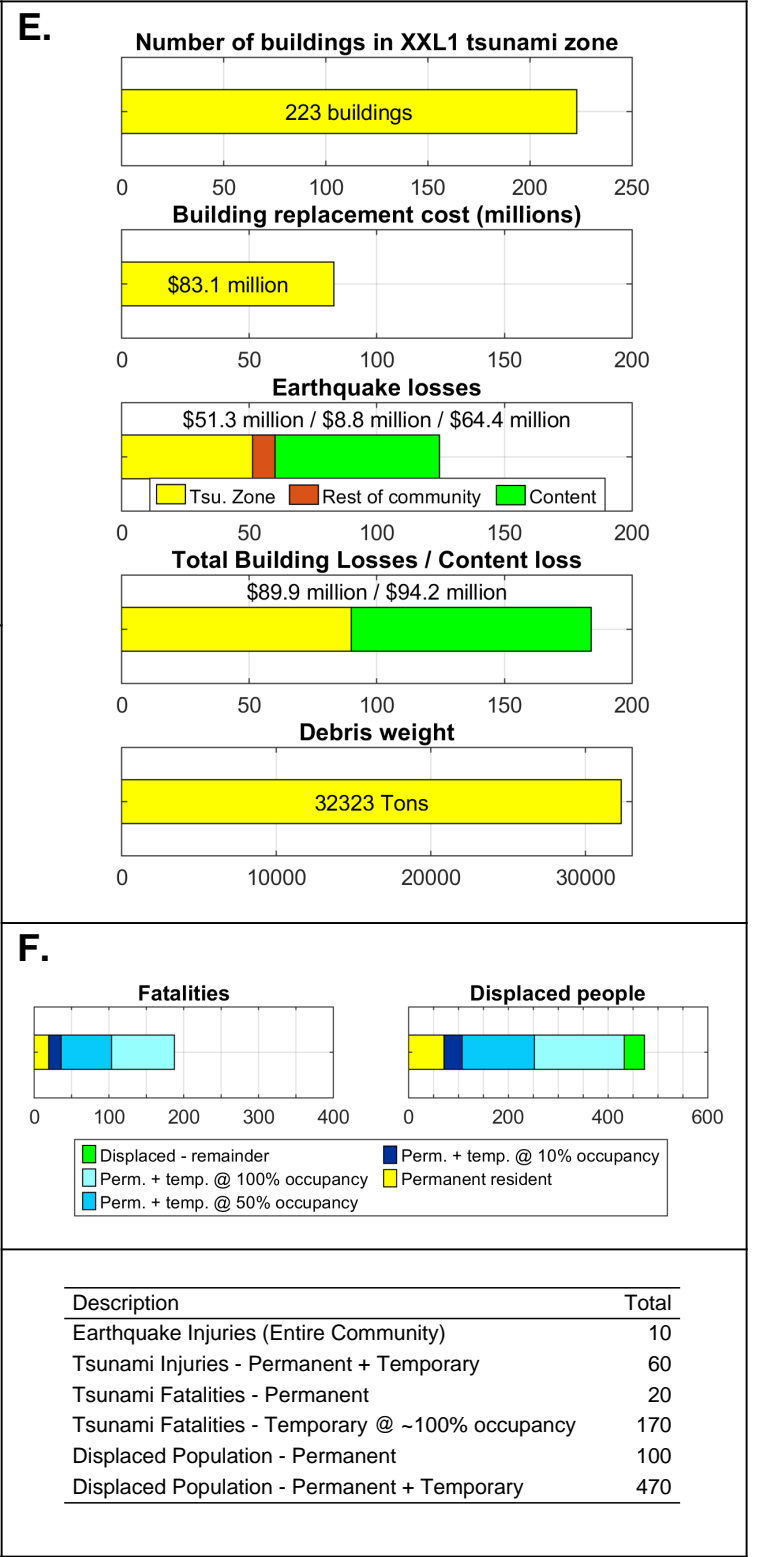
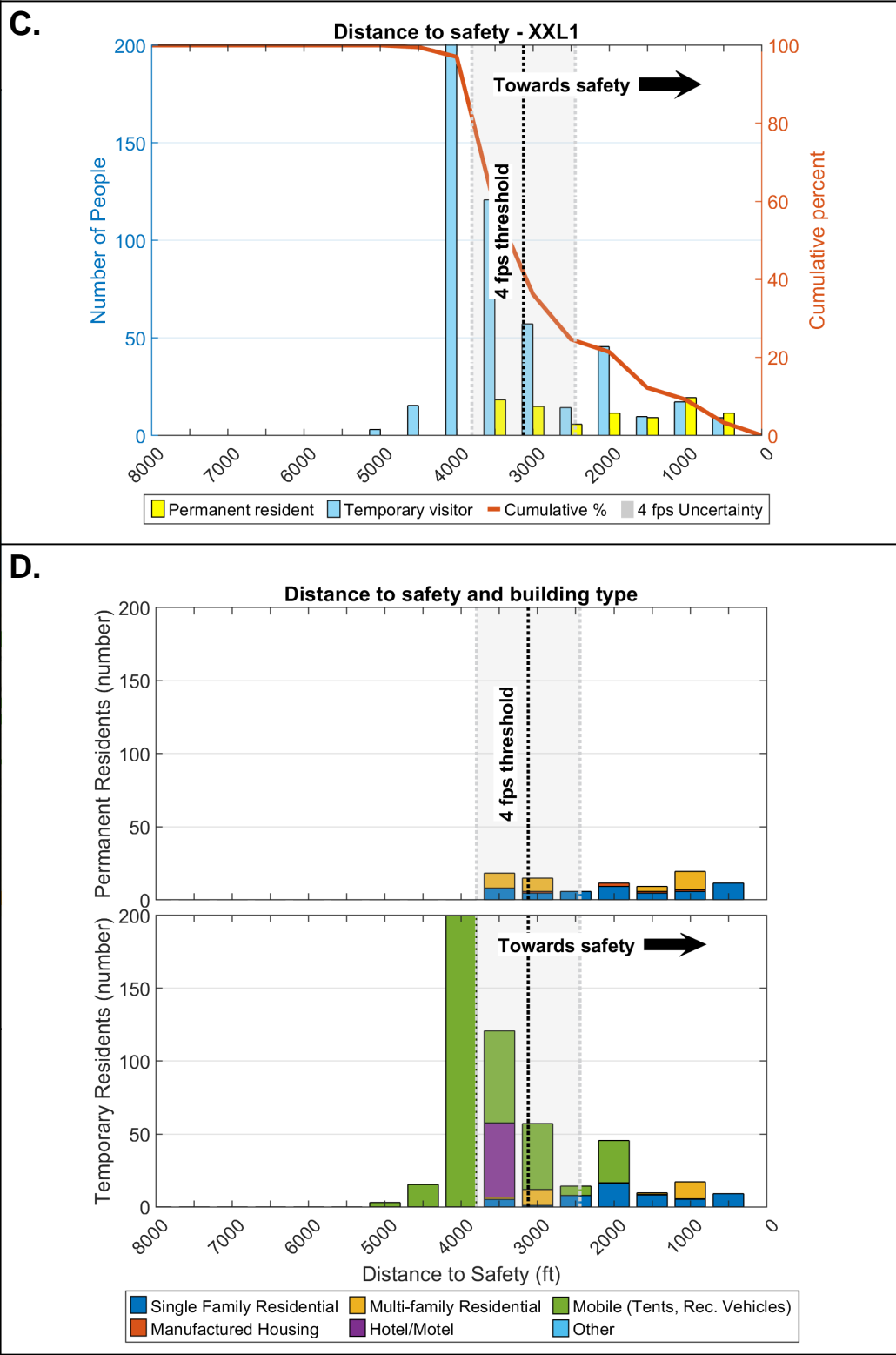
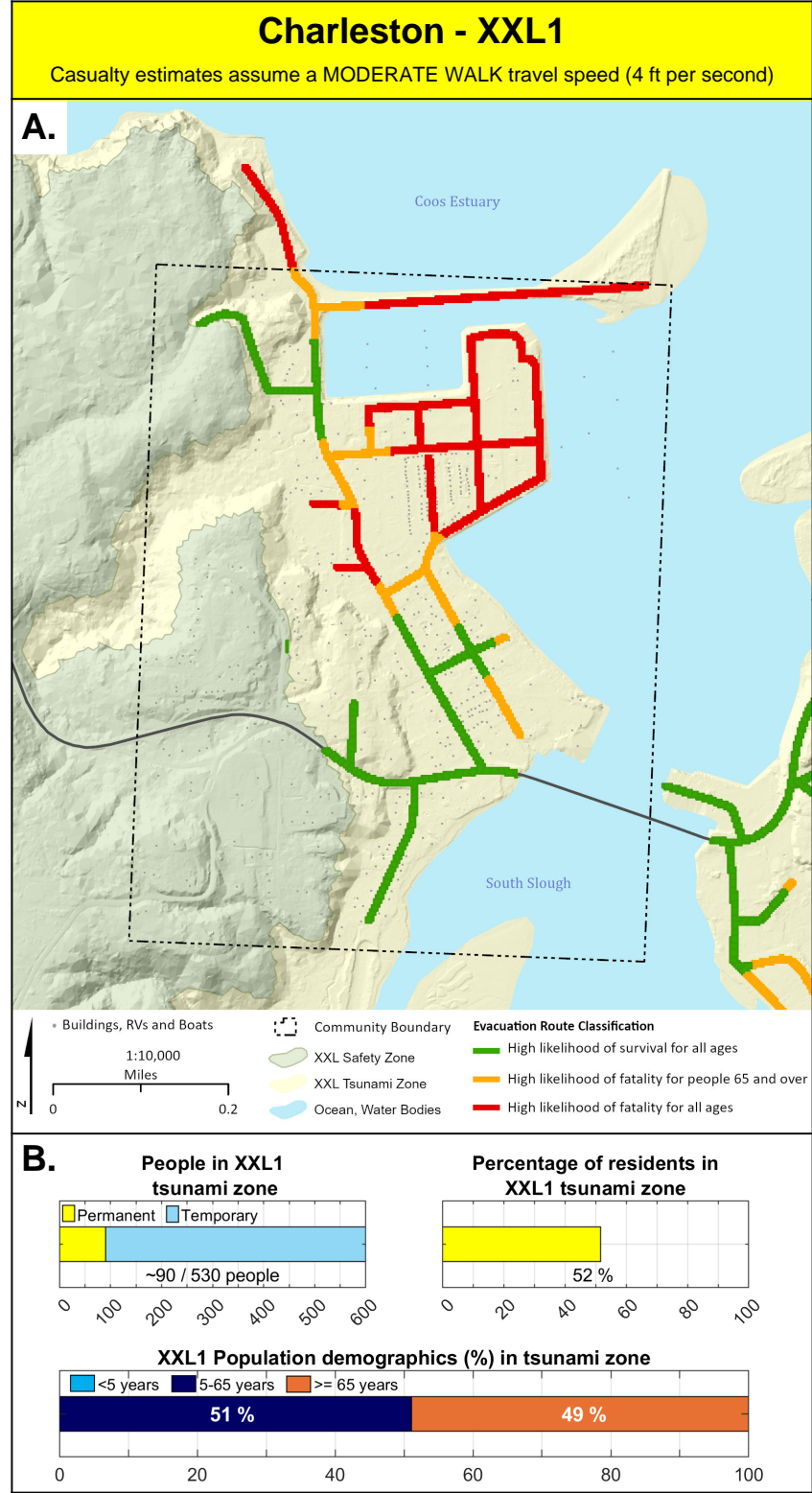


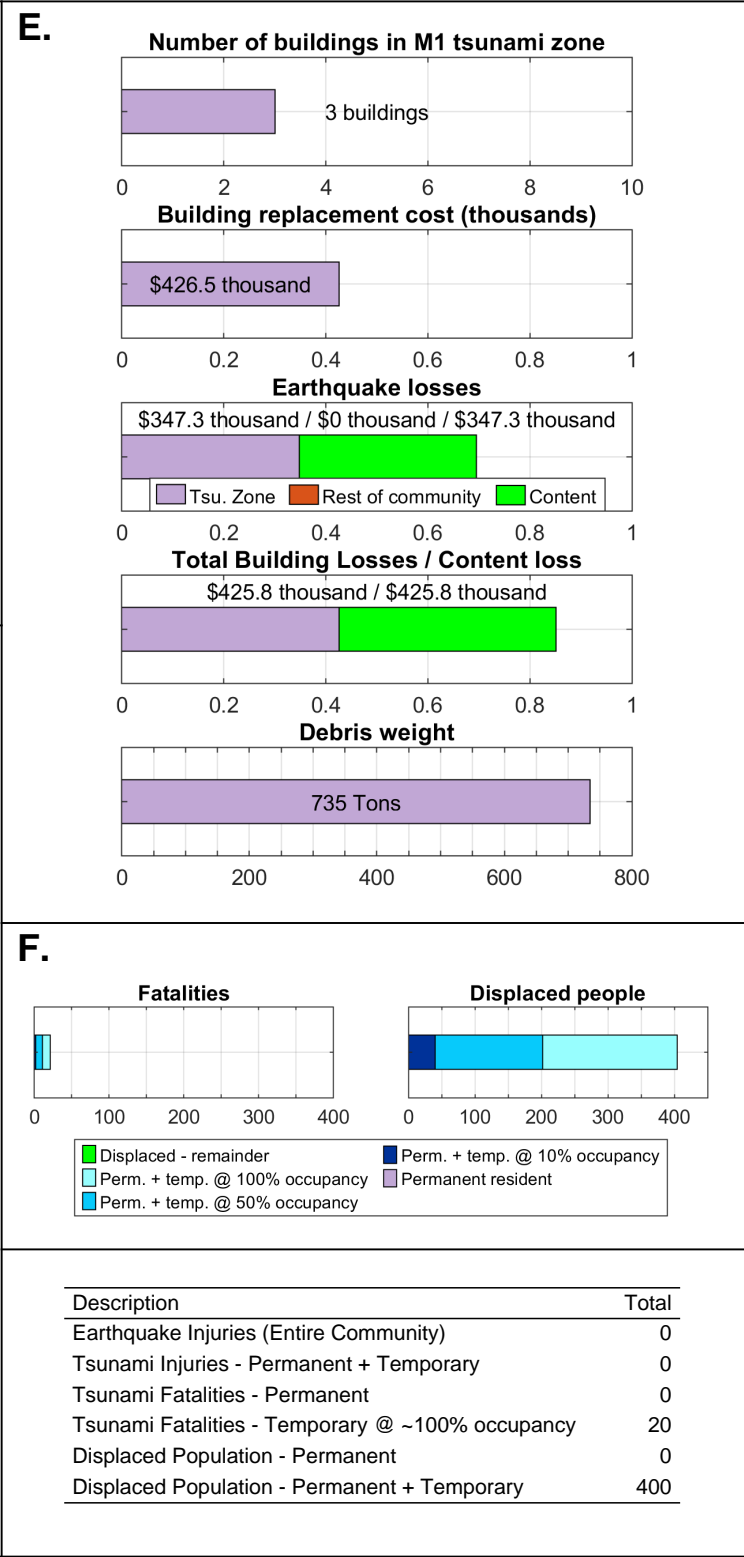
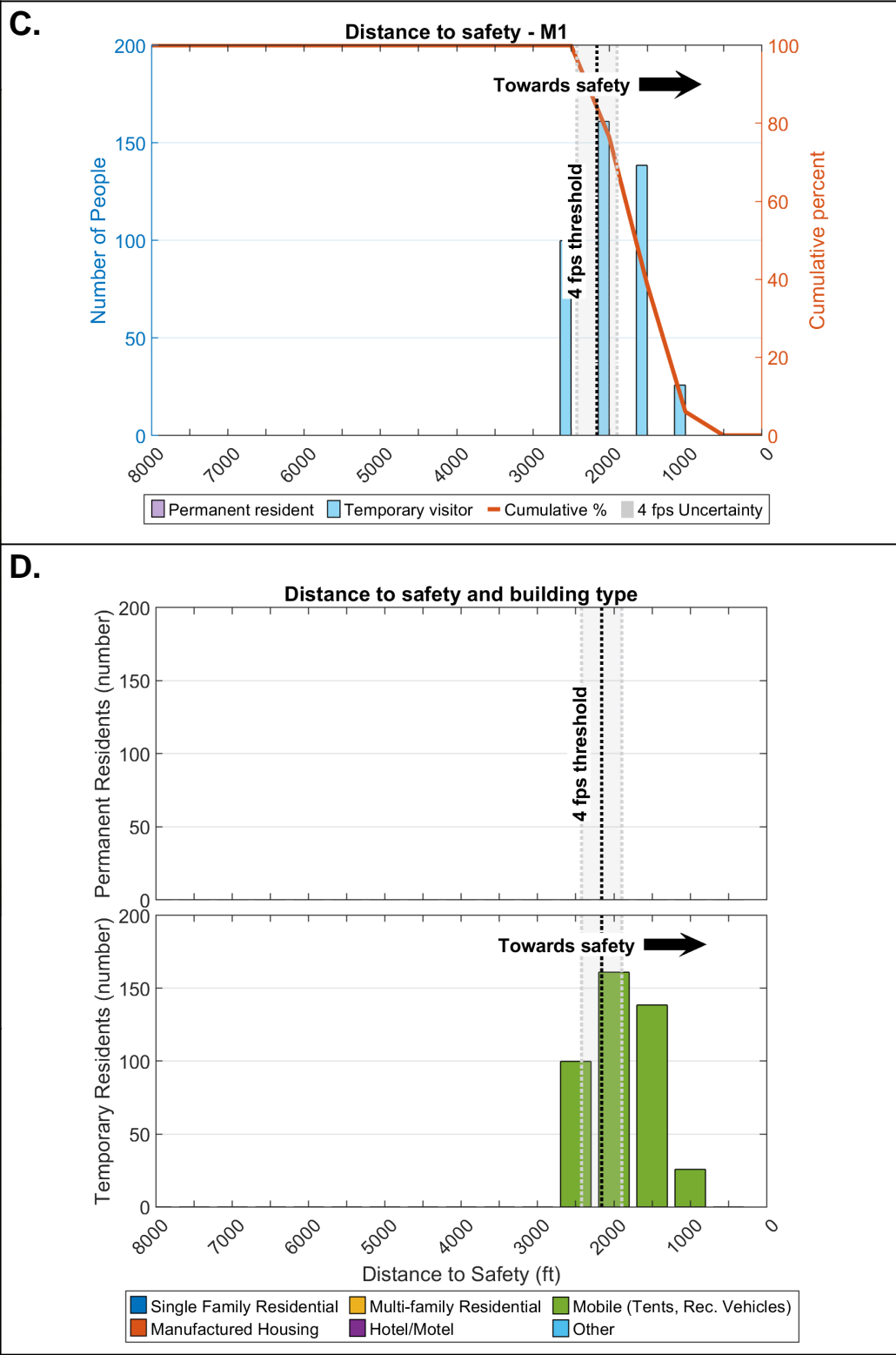
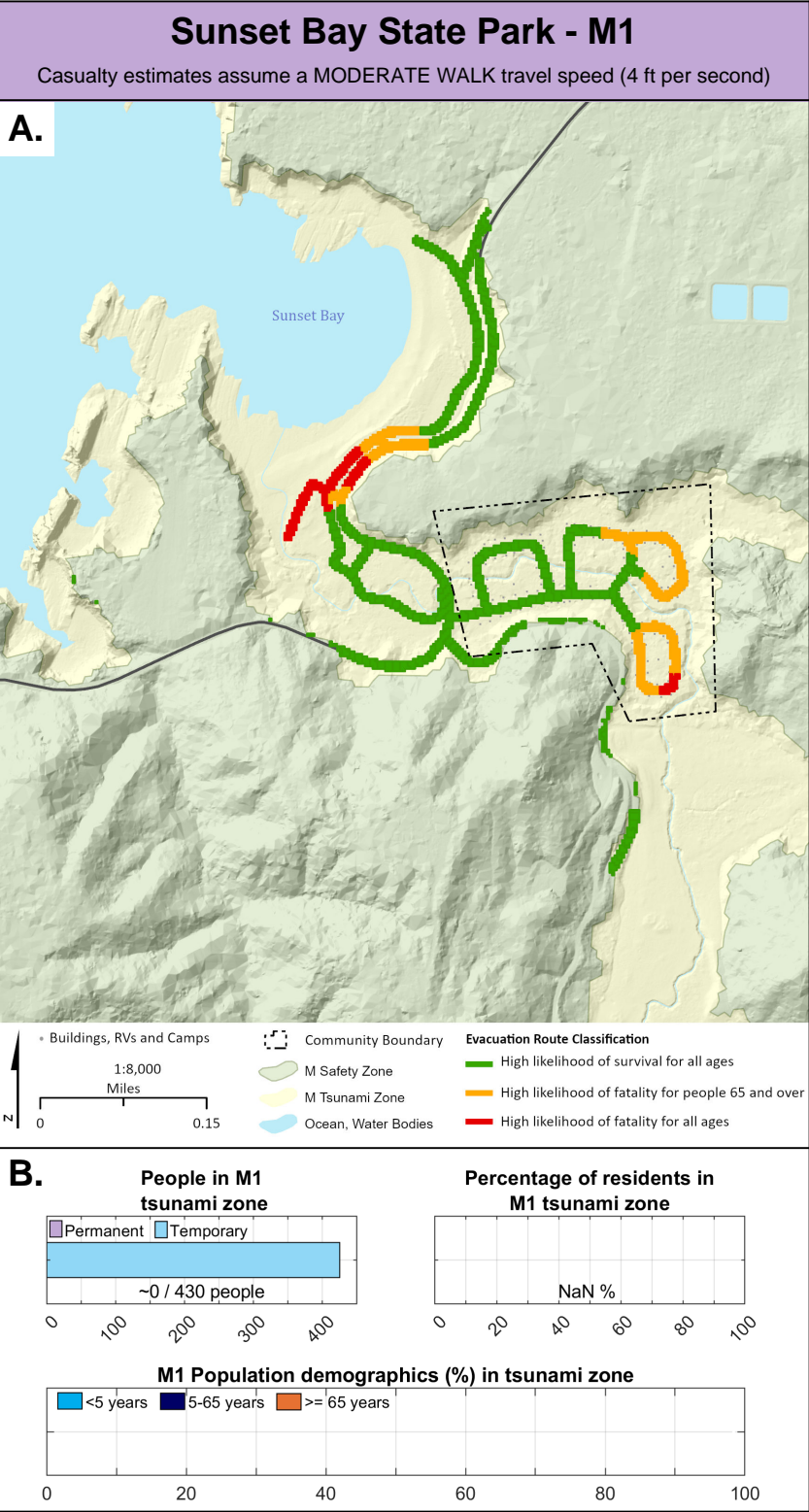
F.

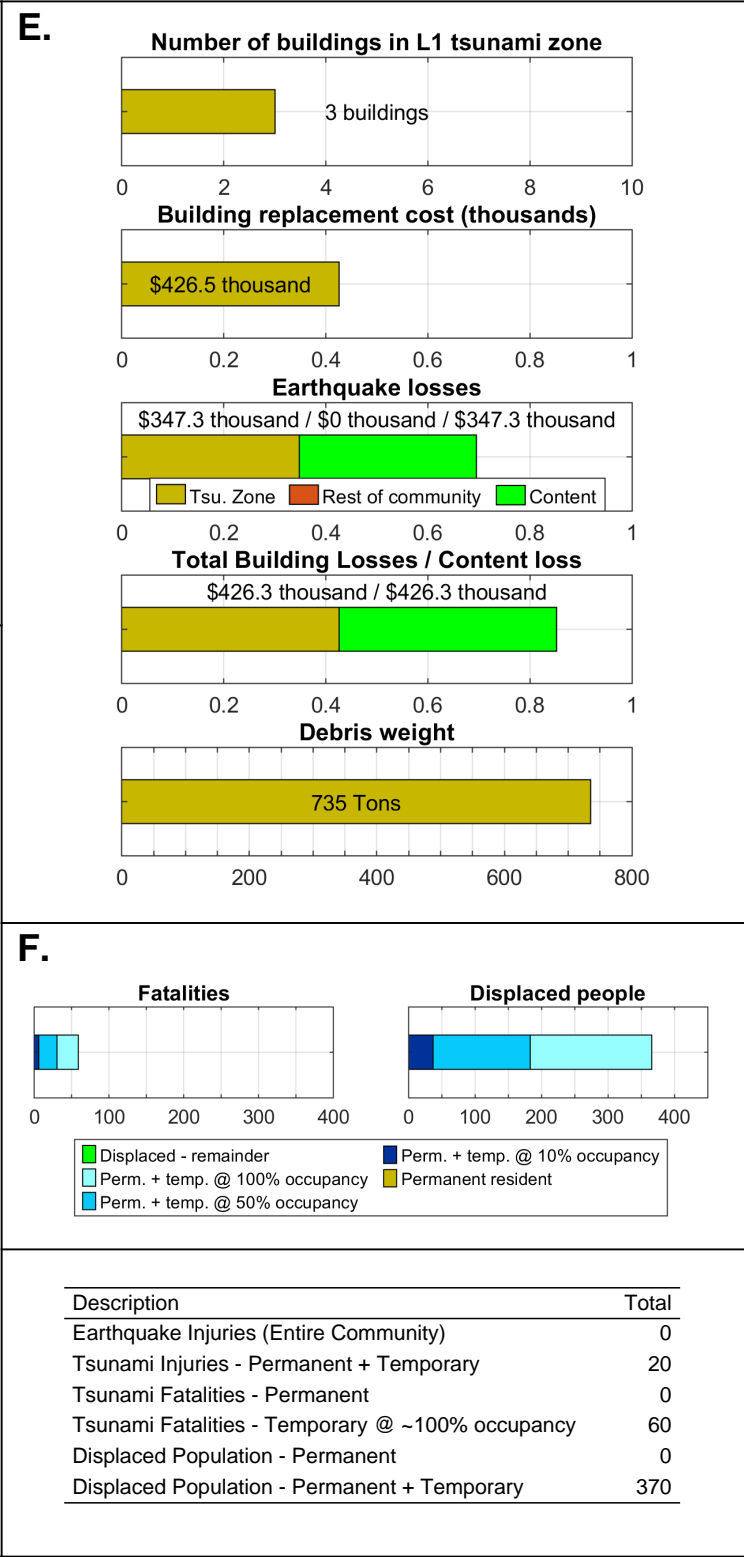
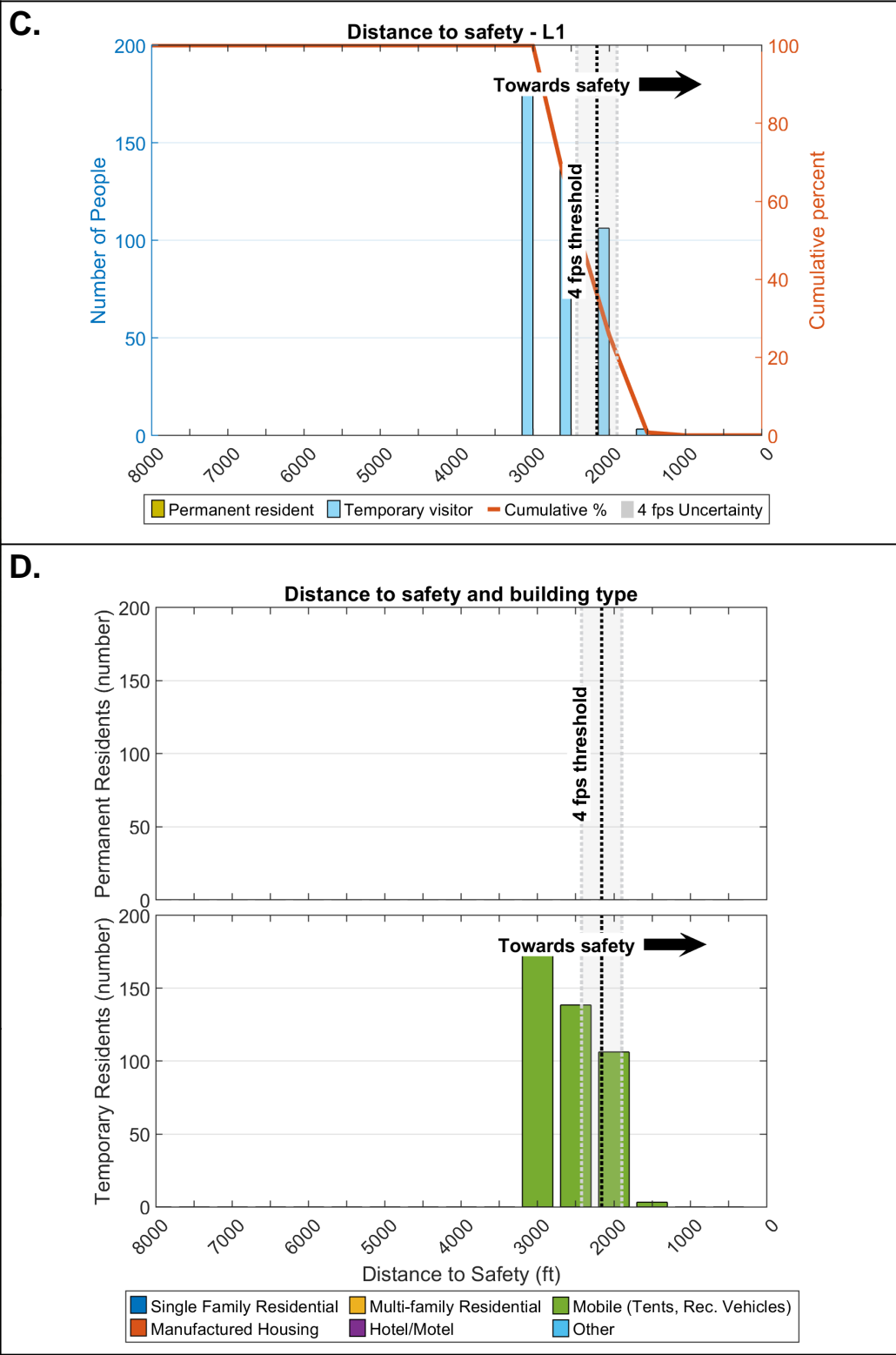
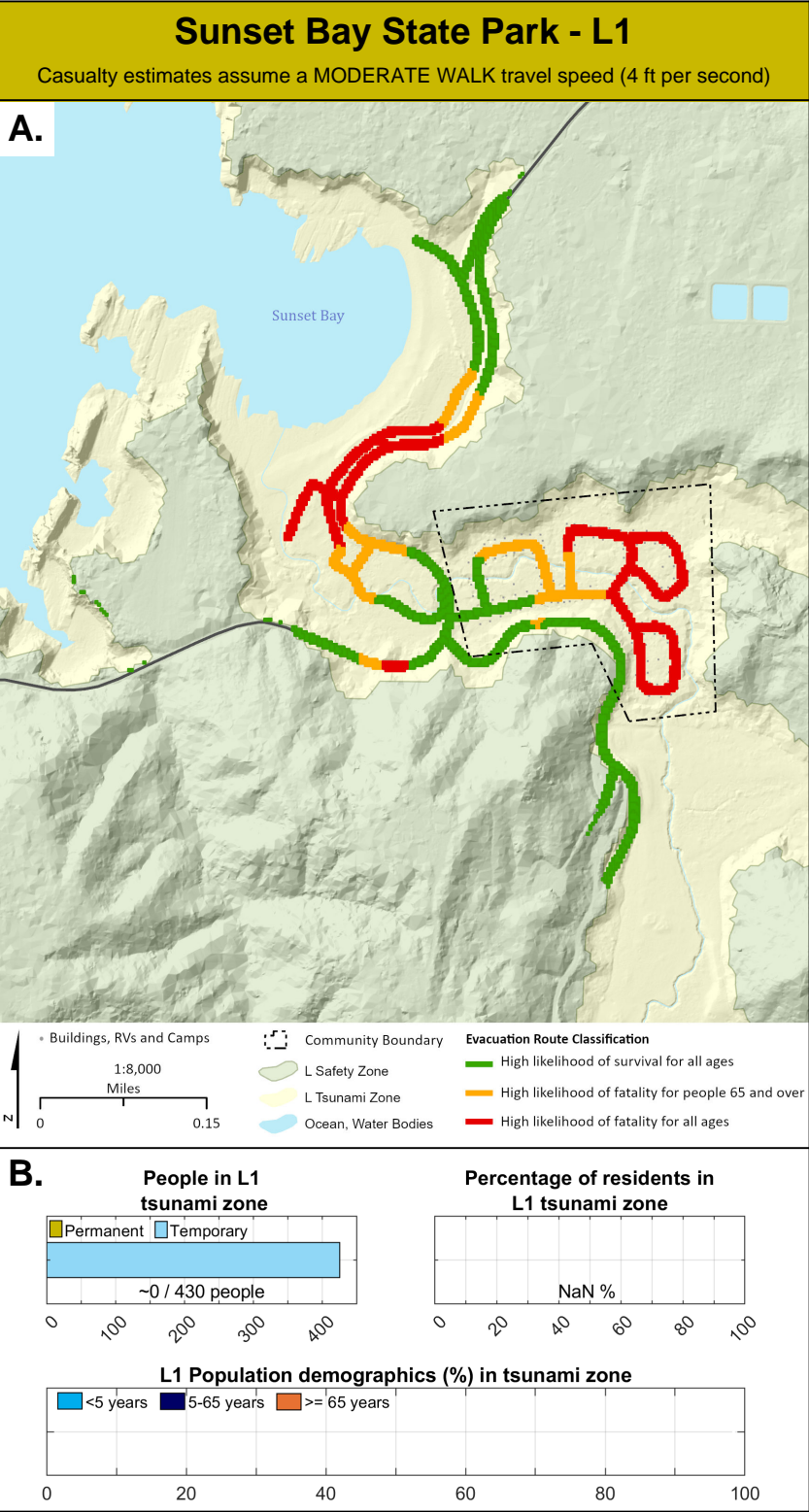


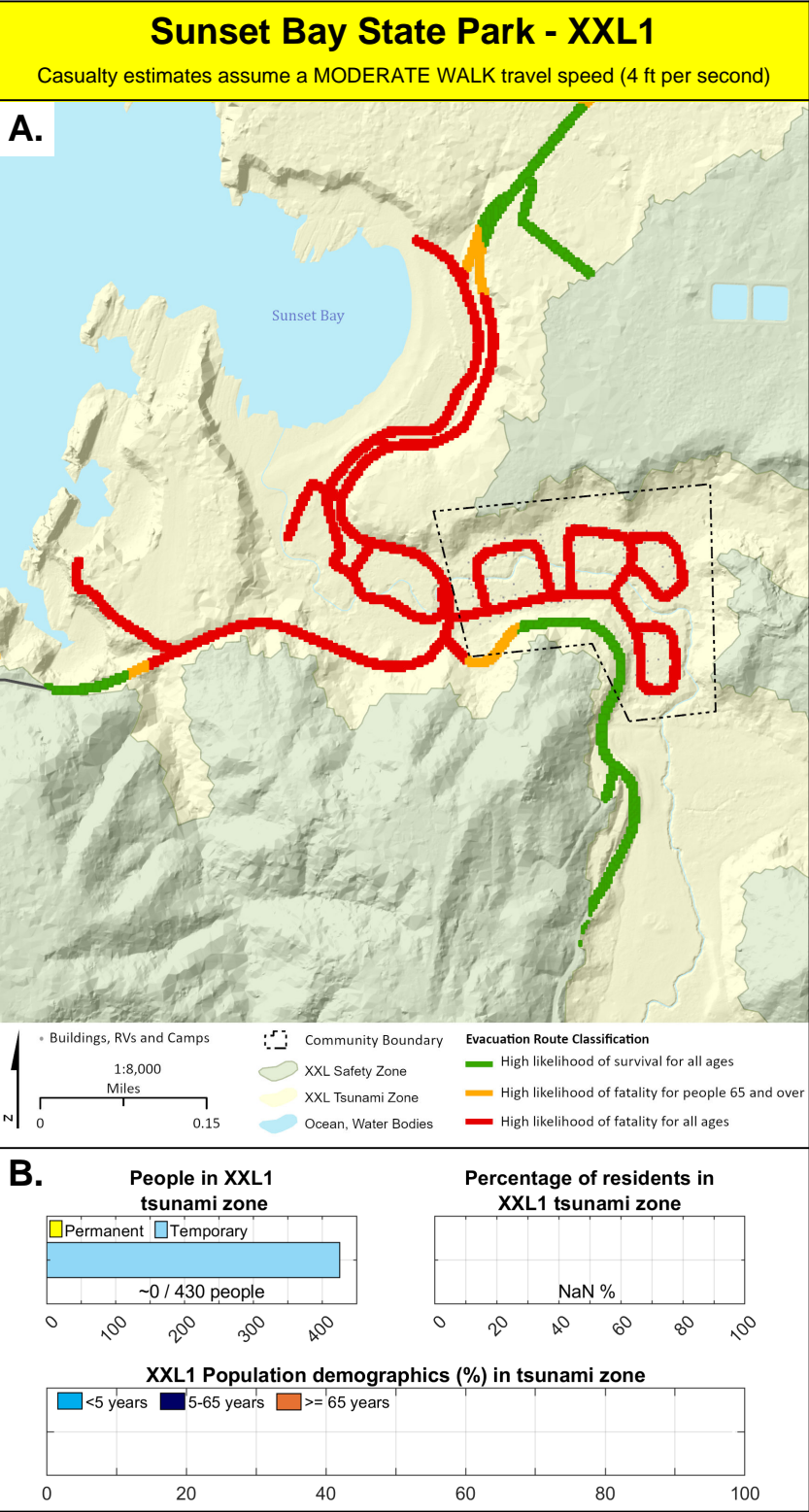
Description	Total
Earthquake Injuries (Entire Community)	10
Tsunami Injuries - Permanent + Temporary	30
Tsunami Fatalities - Permanent	0
Tsunami Fatalities - Temporary @ ~100% occupancy	30
Displaced Population - Permanent	80
Displaced Population - Permanent + Temporary	570

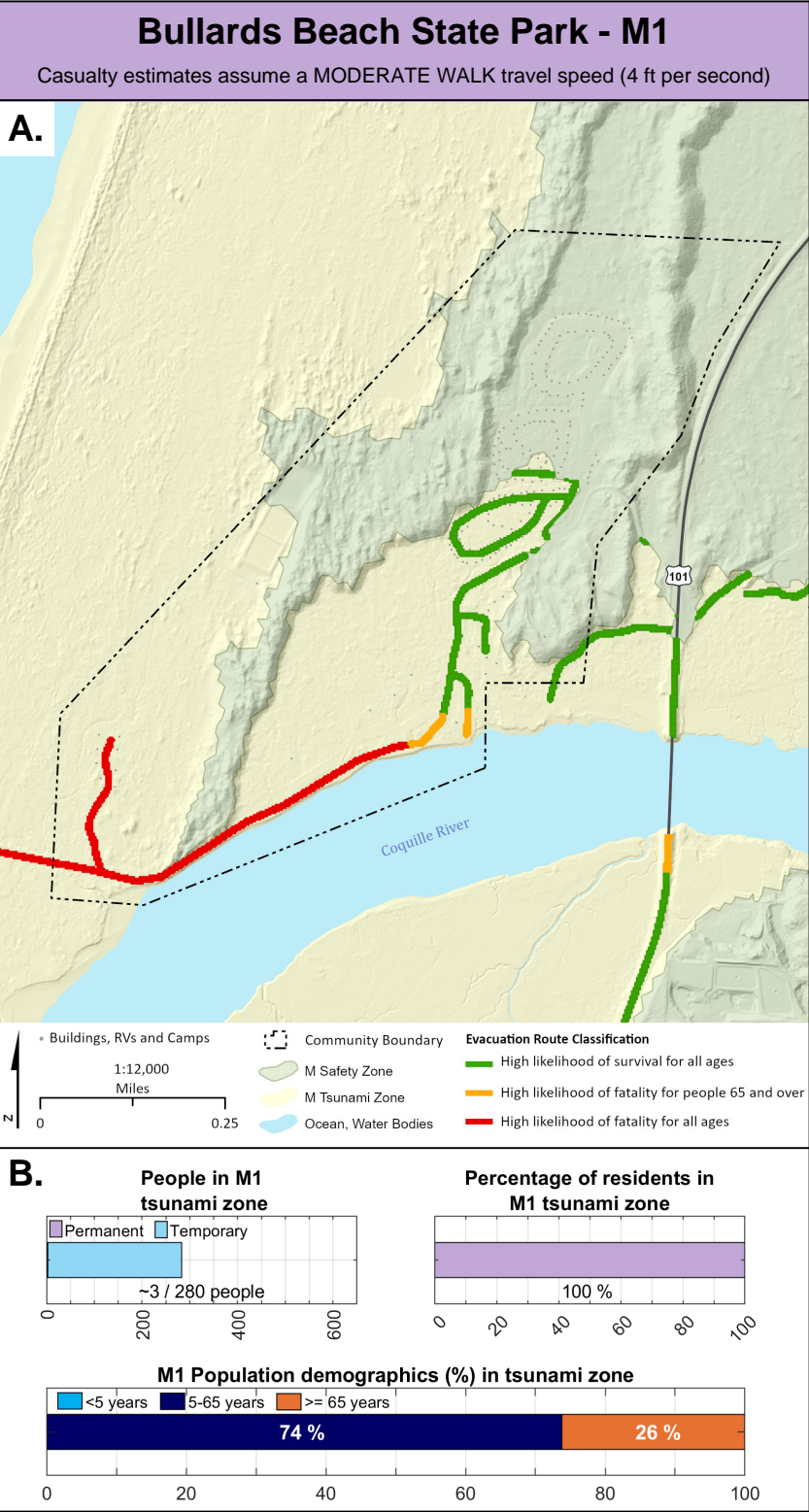


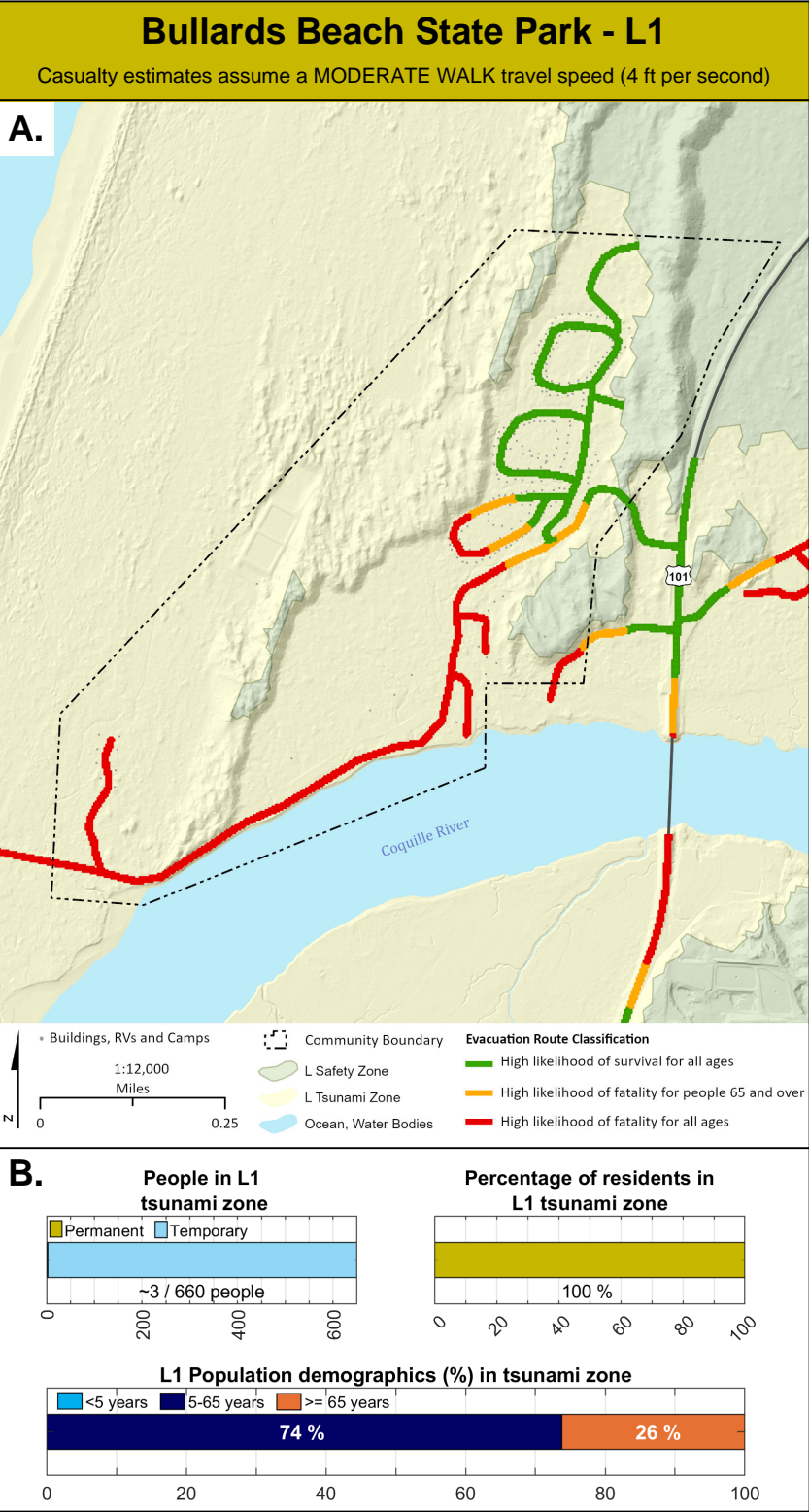












Bullards Beach State Park - XXL1

Casualty estimates assume a MODERATE WALK travel speed (4 ft per second)

A.

• Buildings, RVs and Camps

1:12,000 Miles

0 0.25

Community Boundary

XXL Safety Zone

XXL Tsunami Zone

Ocean, Water Bodies

Evacuation Route Classification

- High likelihood of survival for all ages
- High likelihood of fatality for people 65 and over
- High likelihood of fatality for all ages

Coquille River

101

B.

People in XXL1 tsunami zone

Permanent Temporary

~3 / 660 people

0 200 400 600

Percentage of residents in XXL1 tsunami zone

100 %

0 20 40 60 80 100

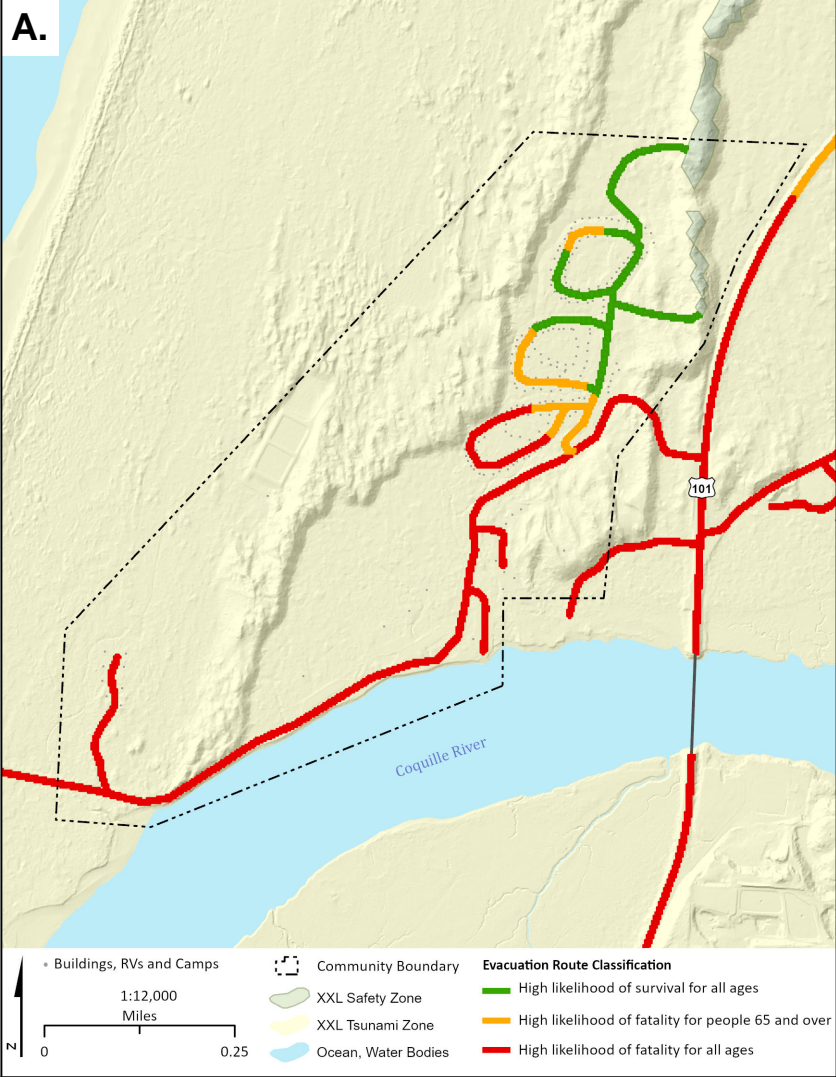
XXL1 Population demographics (%) in tsunami zone

<5 years 5-65 years >= 65 years

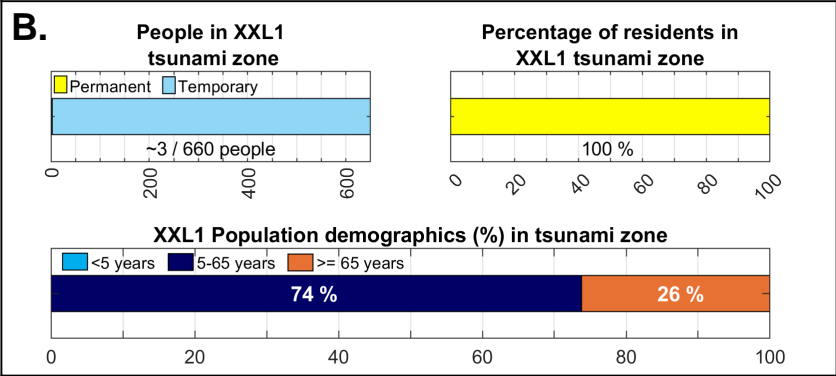
74 % 26 %

0 20 40 60 80 100

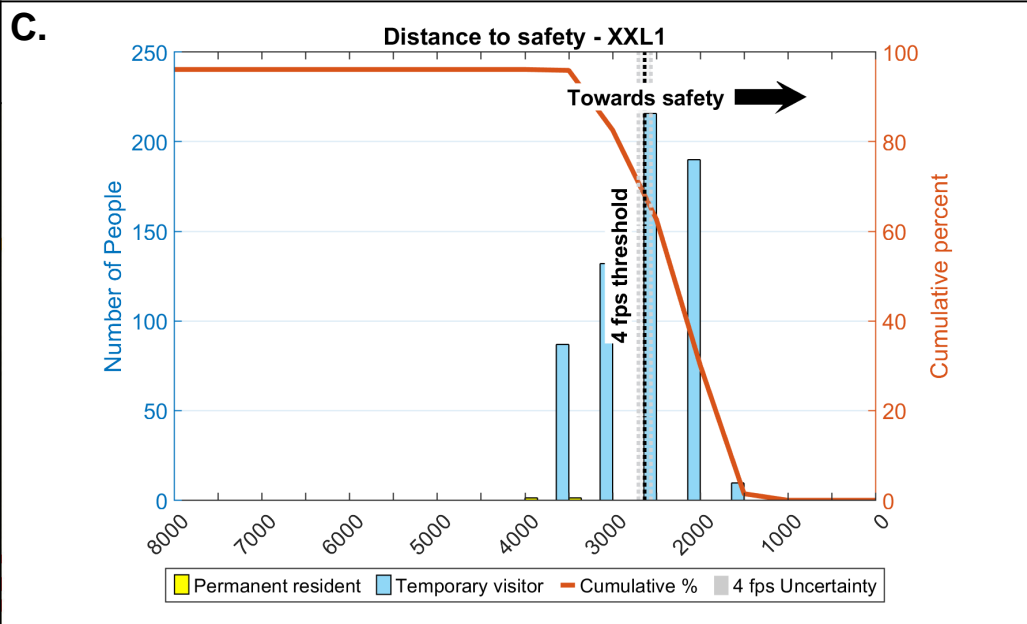
A.



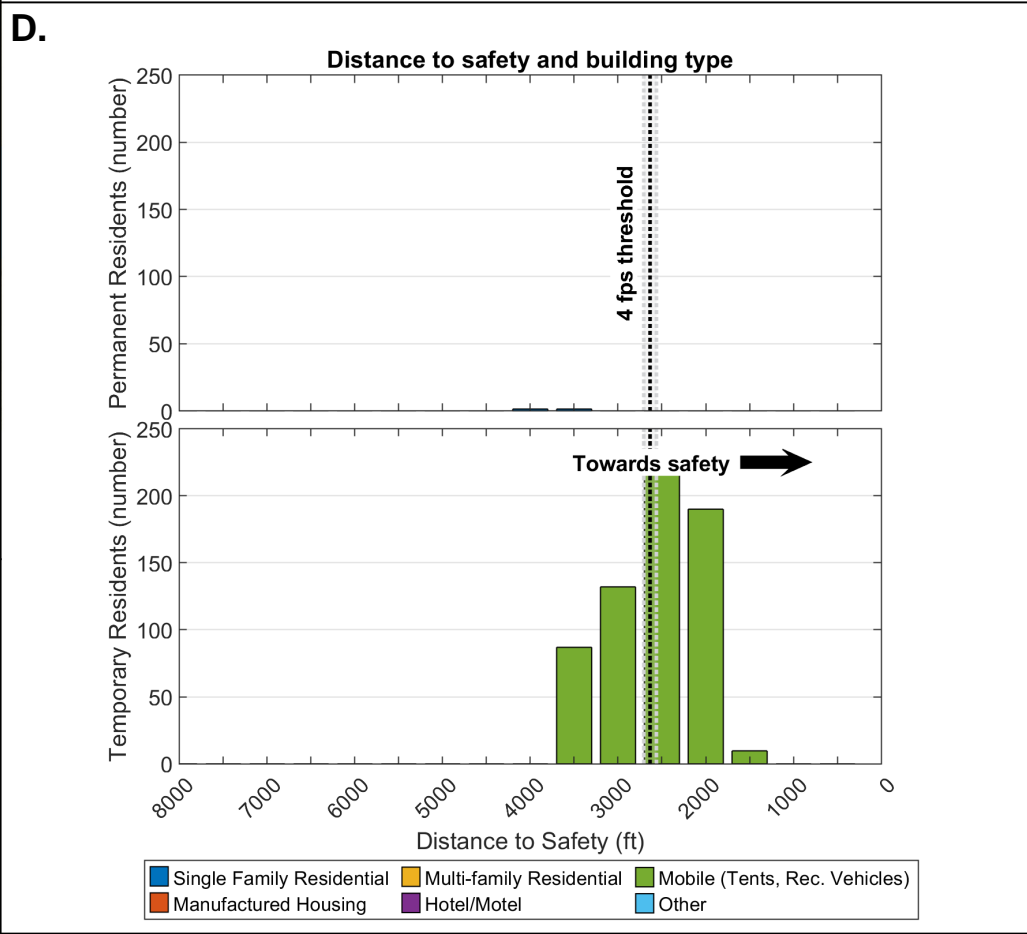
B.



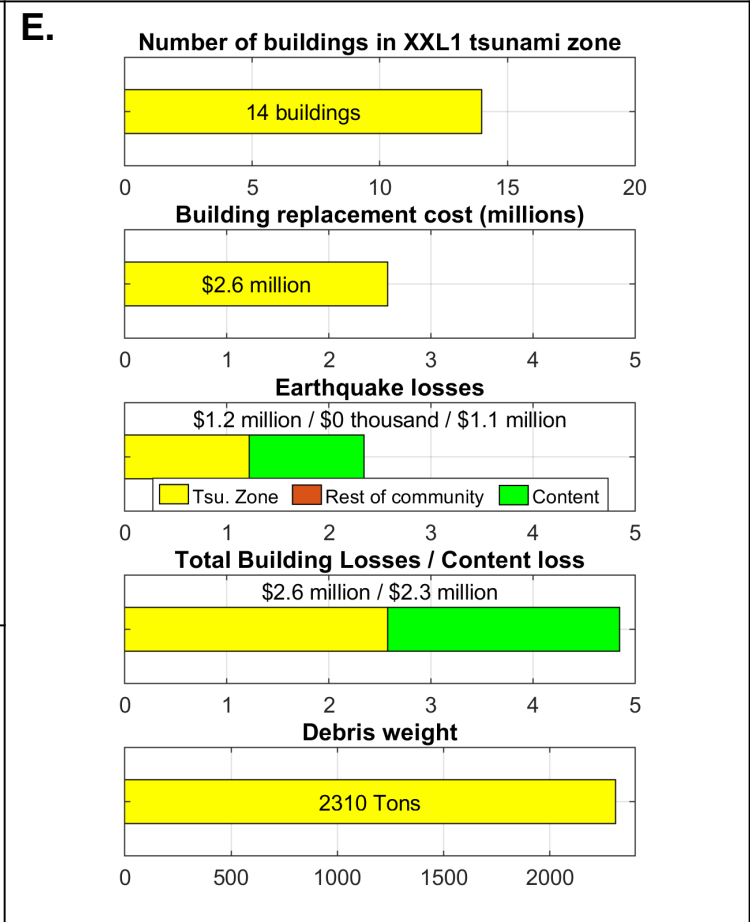
C.



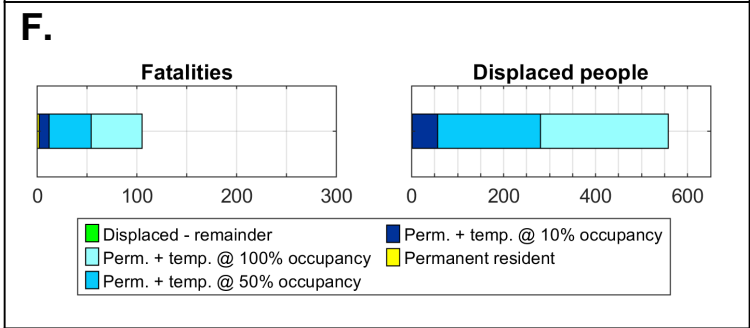
D.



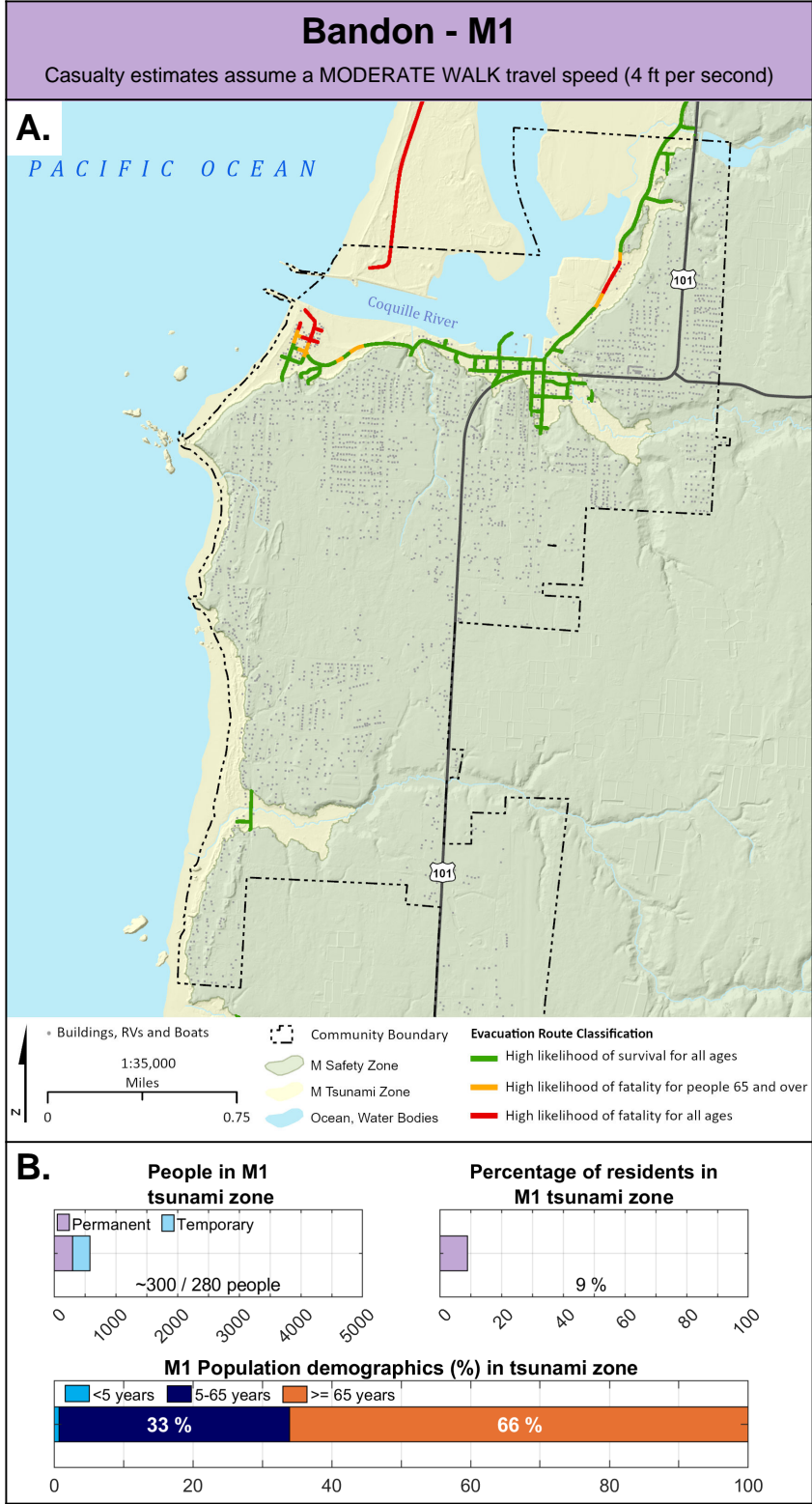
E.

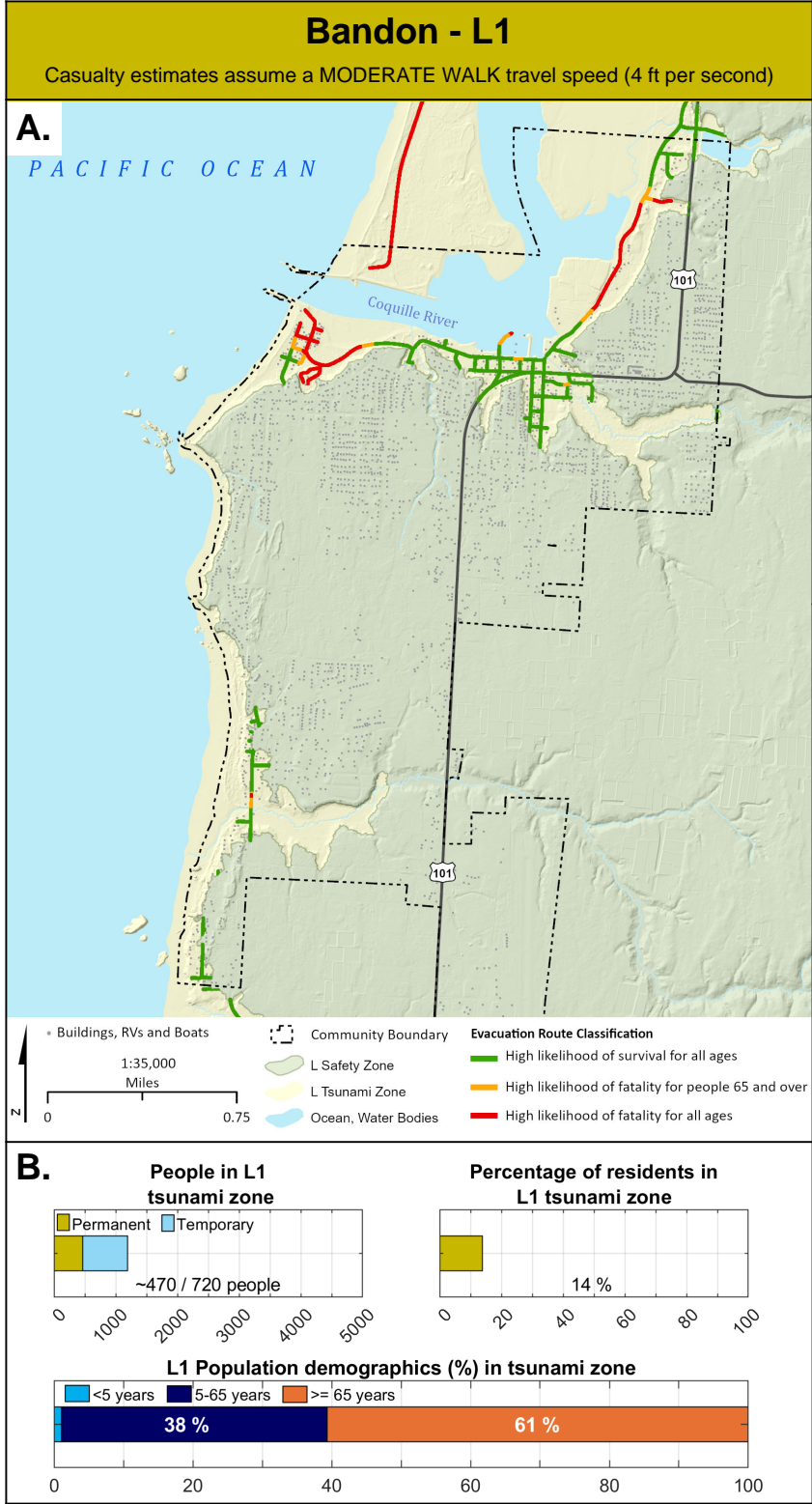


F.



Description	Total
Earthquake Injuries (Entire Community)	0
Tsunami Injuries - Permanent + Temporary	30
Tsunami Fatalities - Permanent	0
Tsunami Fatalities - Temporary @ ~100% occupancy	100
Displaced Population - Permanent	0
Displaced Population - Permanent + Temporary	560





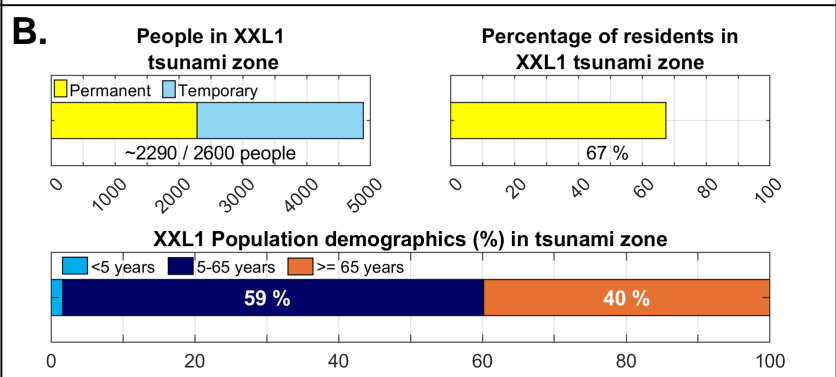
Bandon - XXL1

Casualty estimates assume a MODERATE WALK travel speed (4 ft per second)

This map illustrates the evacuation routes and safety zones for the Coquille River area. The map shows the Pacific Ocean to the west and the Coquille River flowing through the region. The evacuation routes are color-coded: green for high likelihood of survival for all ages, yellow for high likelihood of fatality for people 65 and over, and red for high likelihood of fatality for all ages. The map also shows the community boundary, the XXL Safety Zone, and the XXL Tsunami Zone. A scale bar indicates a distance of 0.75 miles, and a north arrow is present.

Evacuation Route Classification

- High likelihood of survival for all ages
- High likelihood of fatality for people 65 and over
- High likelihood of fatality for all ages



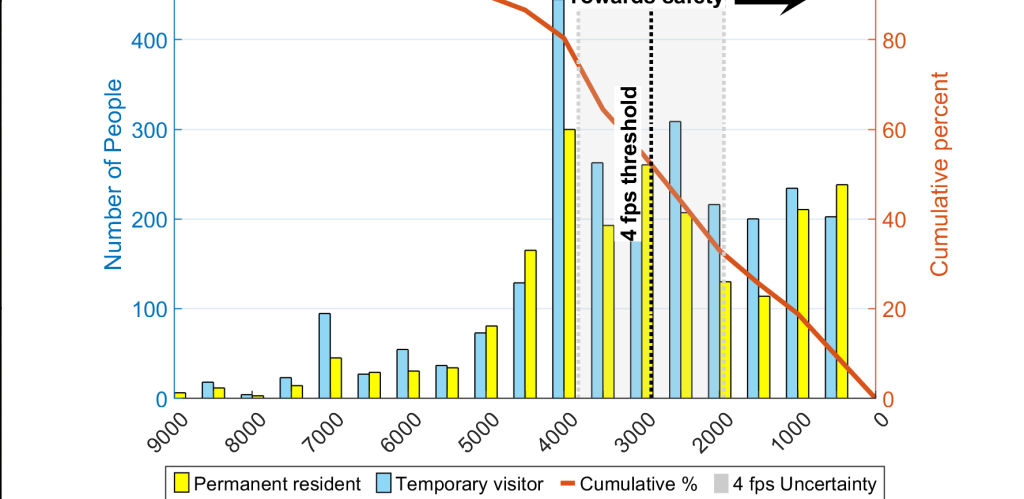
C.

Distance to safety - XXL1

500 100

Towards safety

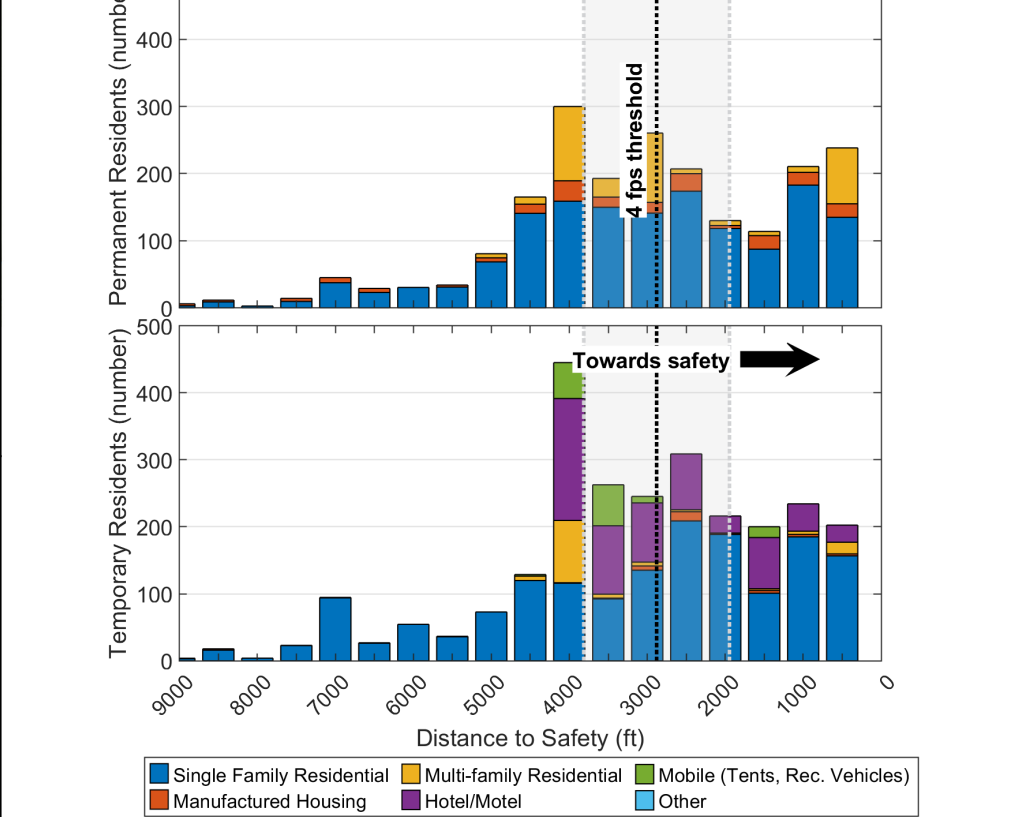
The graph shows a red line representing the distance to safety. The line starts at a value of 500 (indicated by a blue label) and decreases over time, reaching a value of 100 (indicated by an orange label). A black arrow points to the right, labeled 'Towards safety', indicating the direction of the trend.



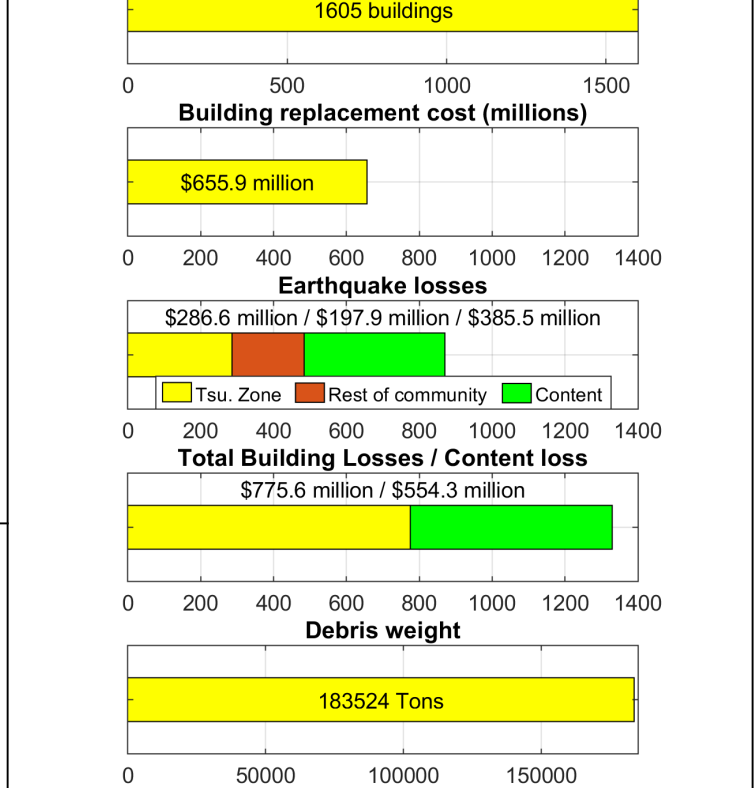
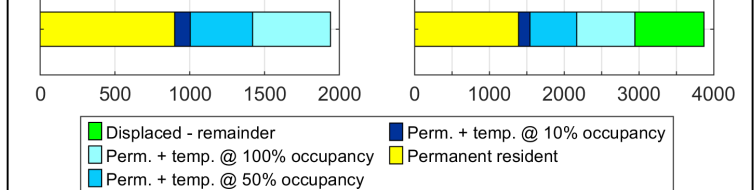
D.

Distance to safety and building type

er) 500



E.	Number of buildings in XXL1 tsunami zone			

[illegible]

Description	Total
Earthquake Injuries (Entire Community)	210
Tsunami Injuries - Permanent + Temporary	840
Tsunami Fatalities - Permanent	900
Tsunami Fatalities - Temporary @ ~100% occupancy	1,040
Displaced Population - Permanent	1,970
Displaced Population - Permanent + Temporary	3,870